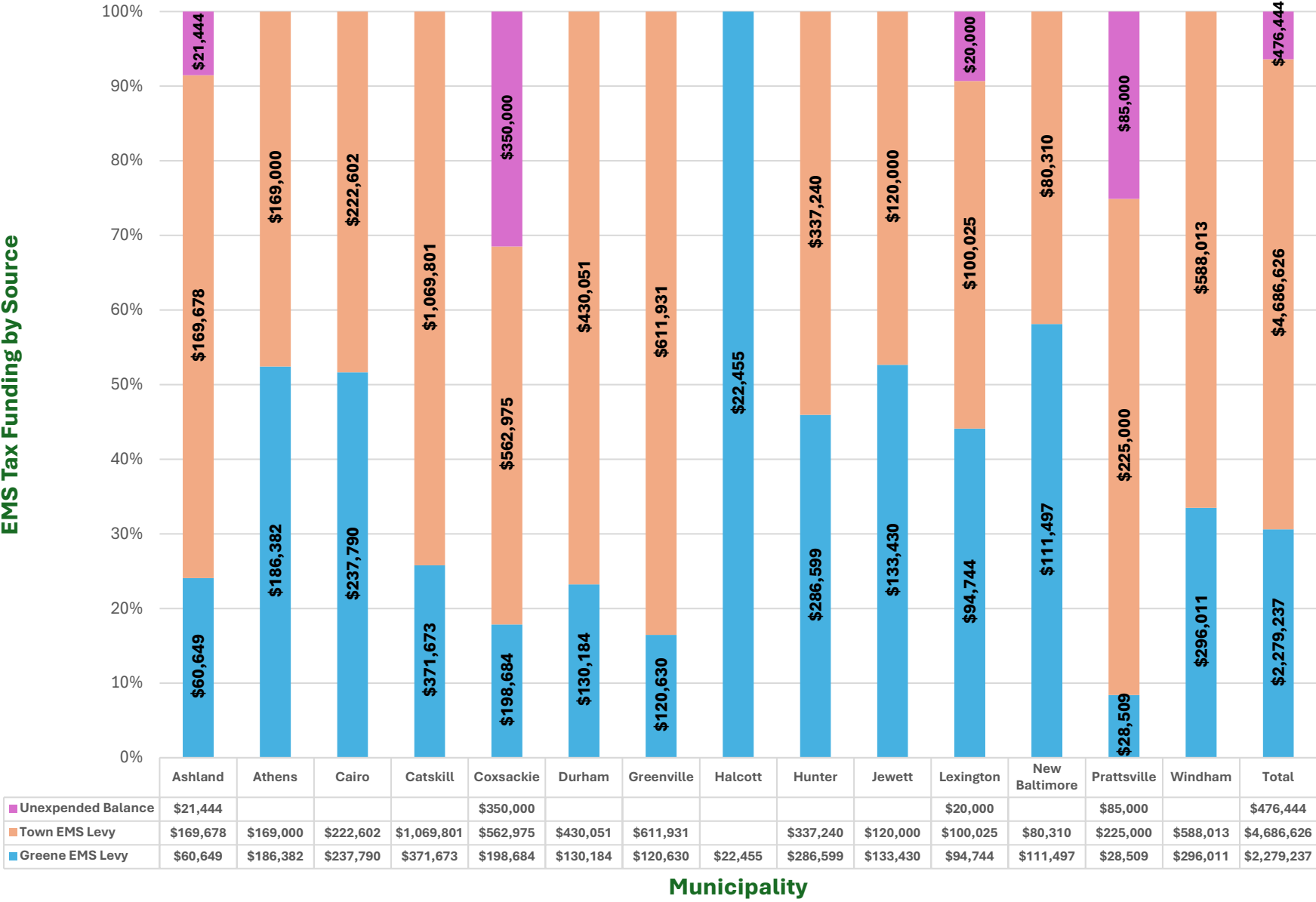
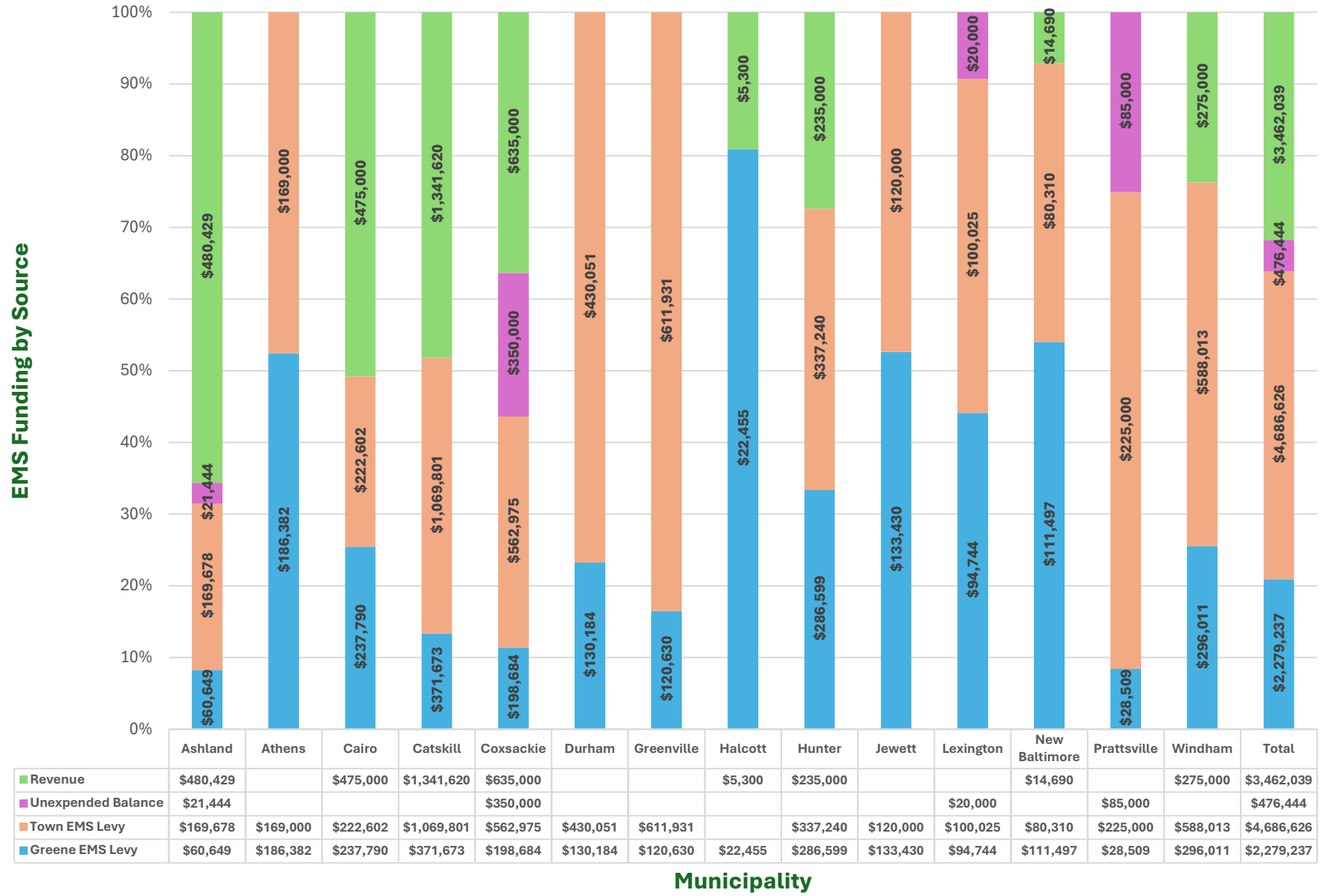


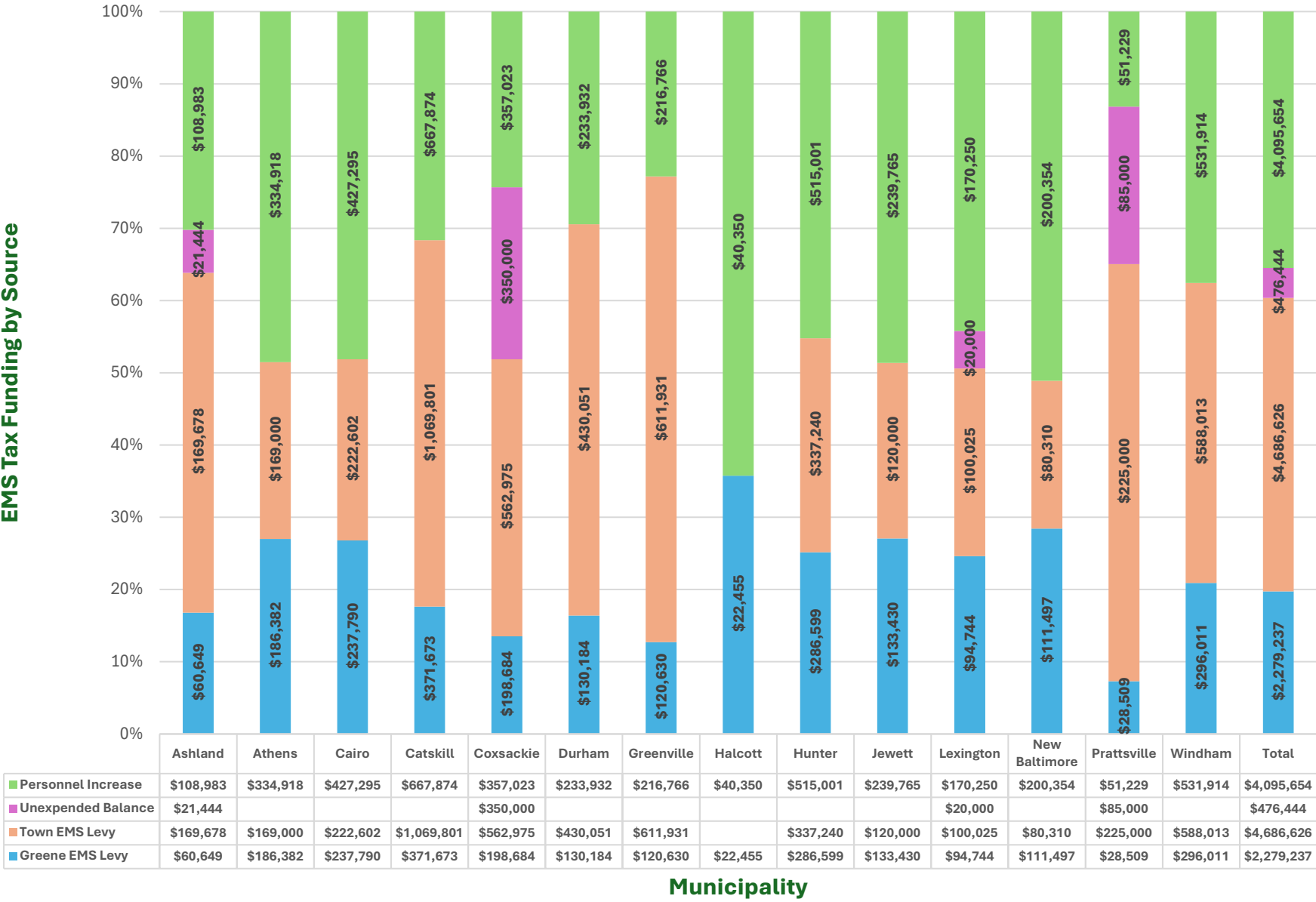
Chart 1 - Current EMS Tax Funding (\$7,442,307)



## Chart 2 - Current EMS Funding from All Sources (\$10,904,346)



**Chart 3 - Current EMS Tax Funding + Personnel Increase (\$11,537,961)**



**Chart 4 - Distribution of County EMS Tax Levy (\$11,537,961)**

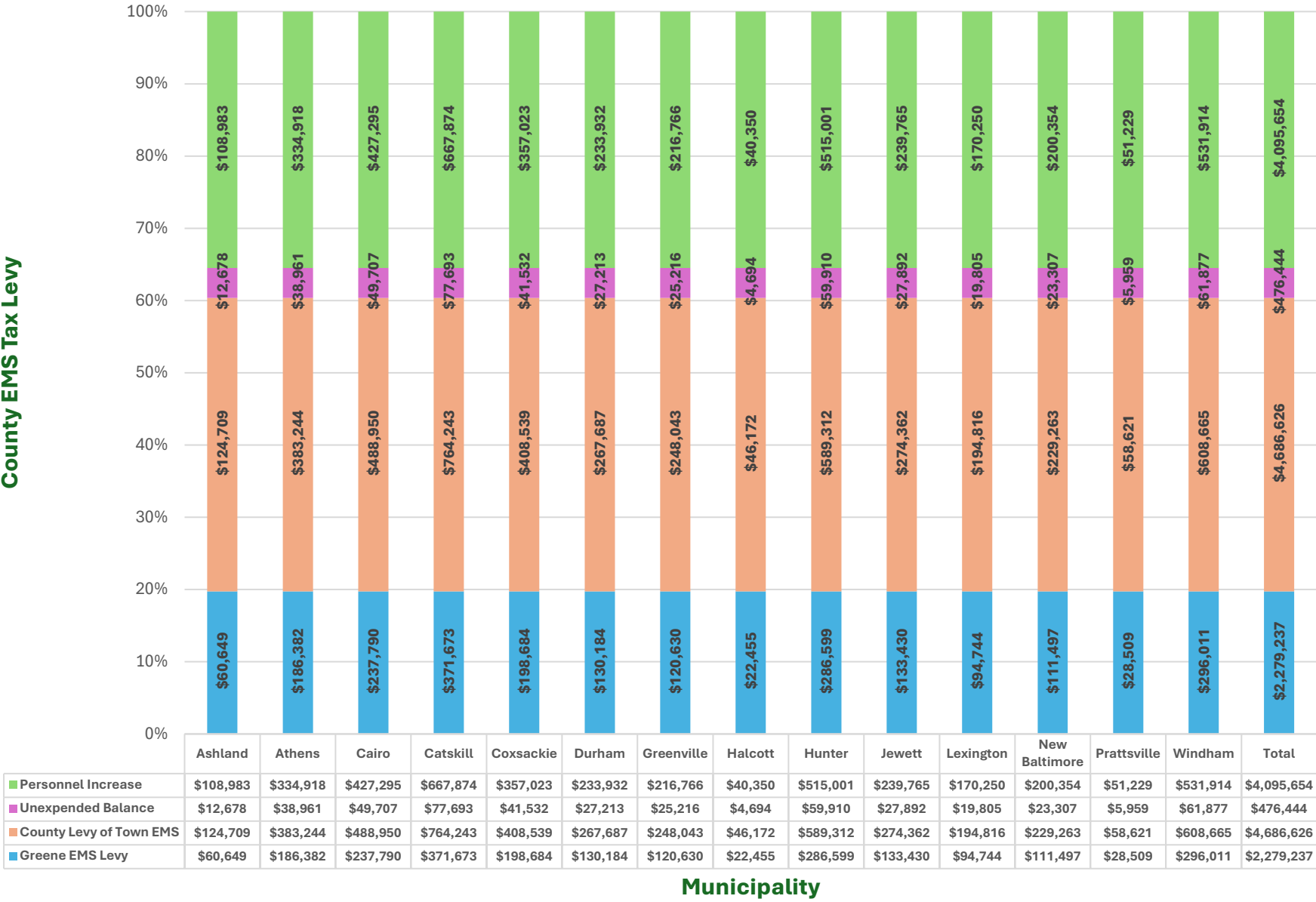
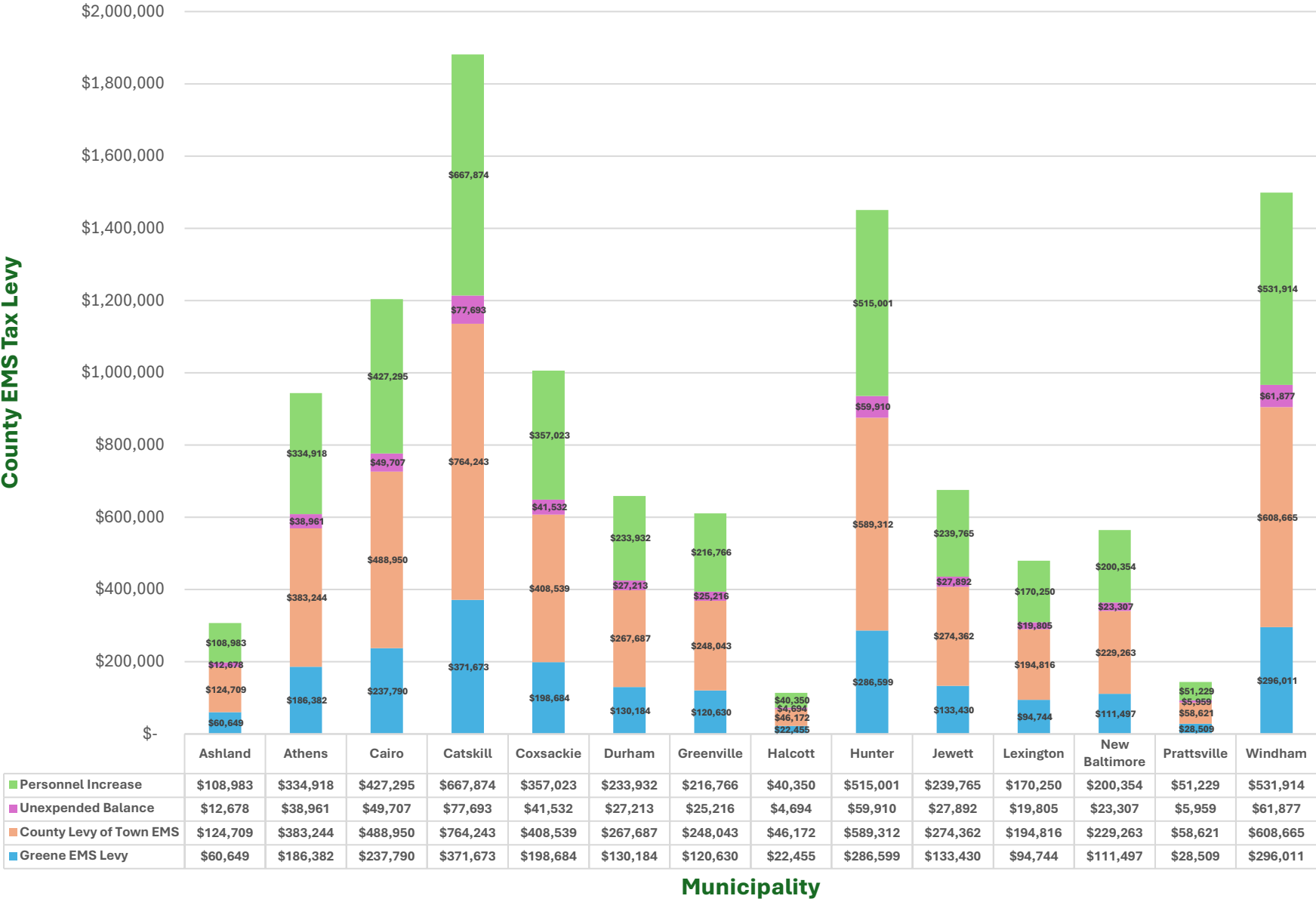


Chart 4 a - Distribution of County EMS Tax Levy (\$11,537,961)



### Chart 5 - County Levy of All Operational Expenses (\$11,537,961)

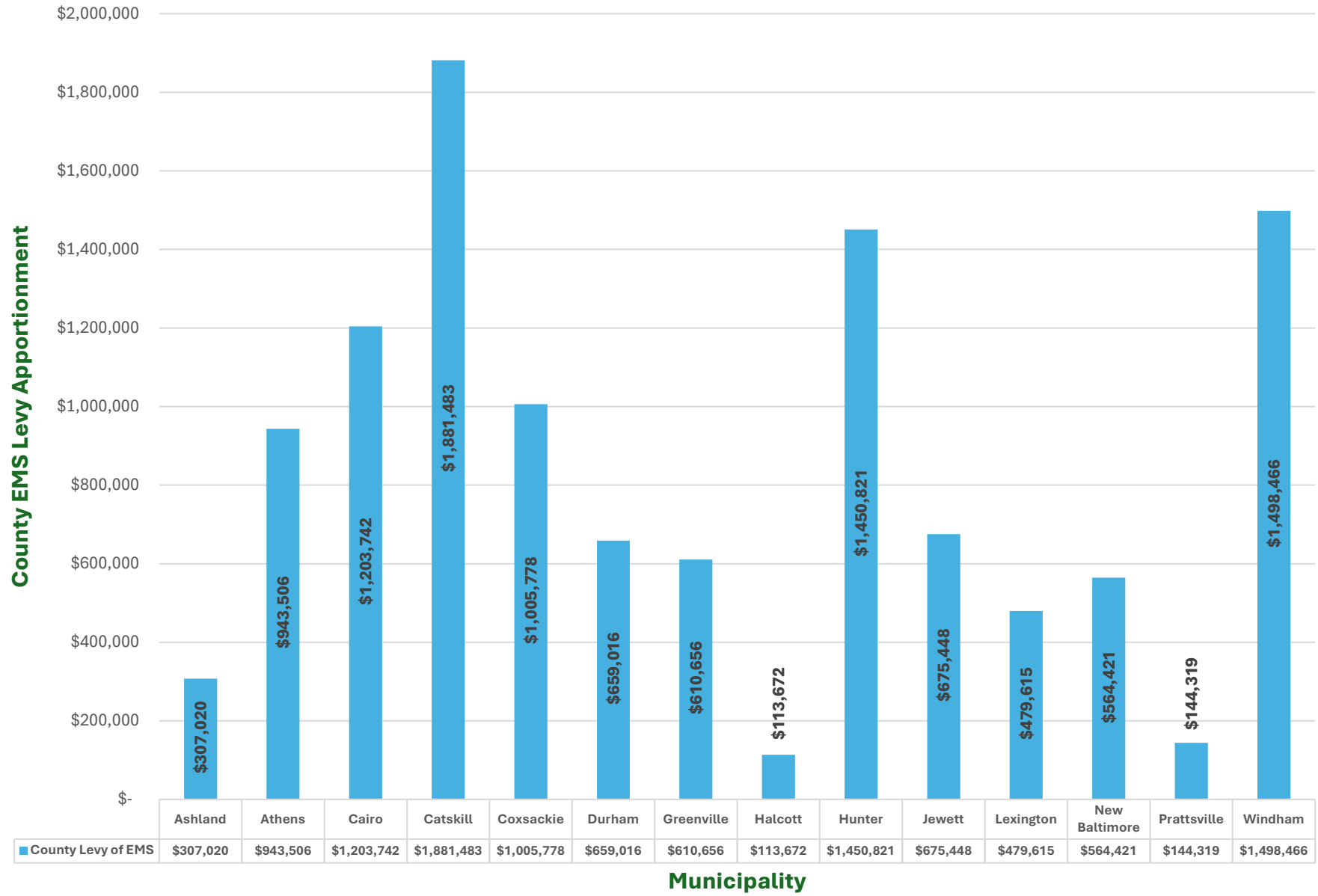
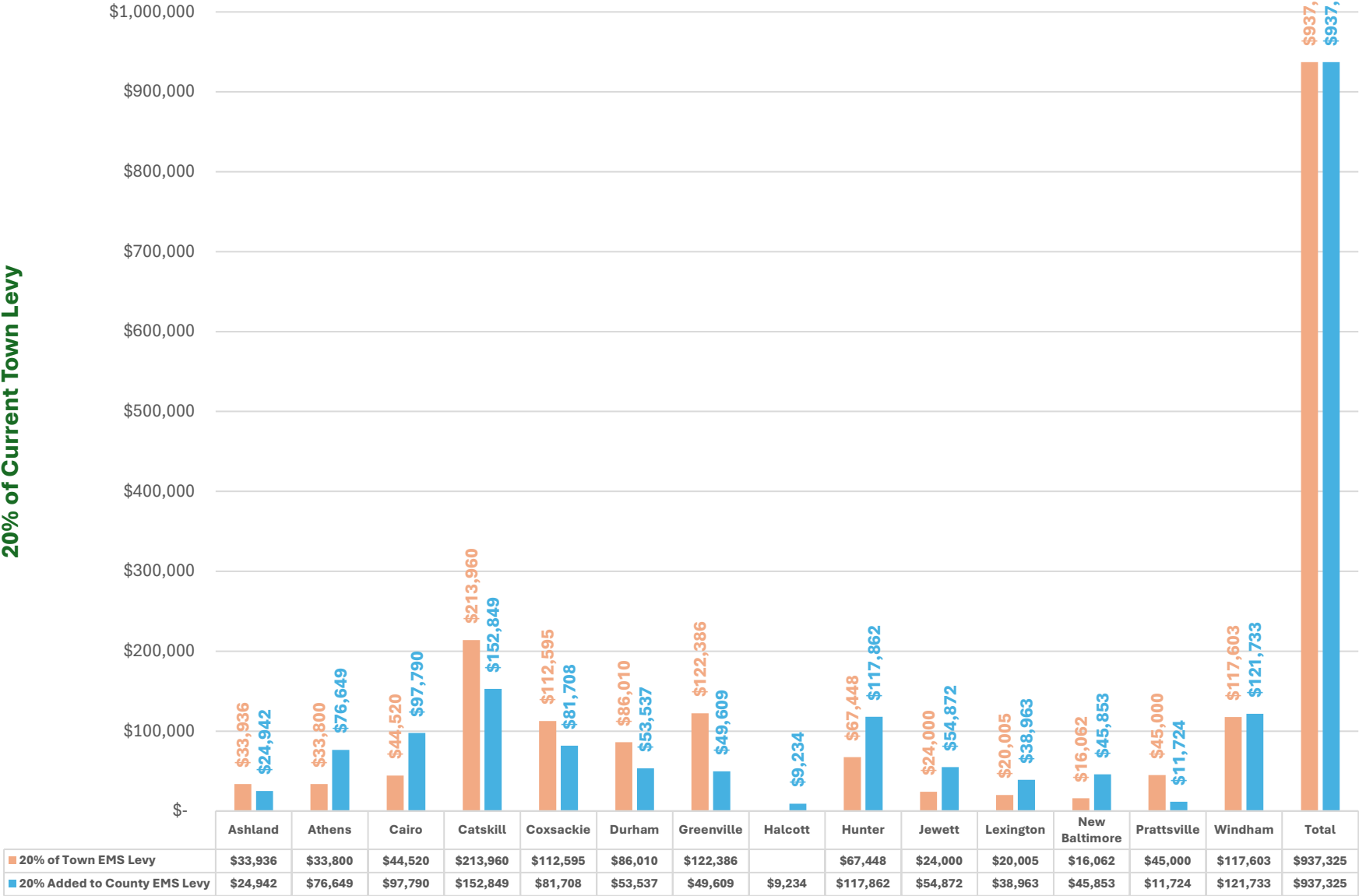
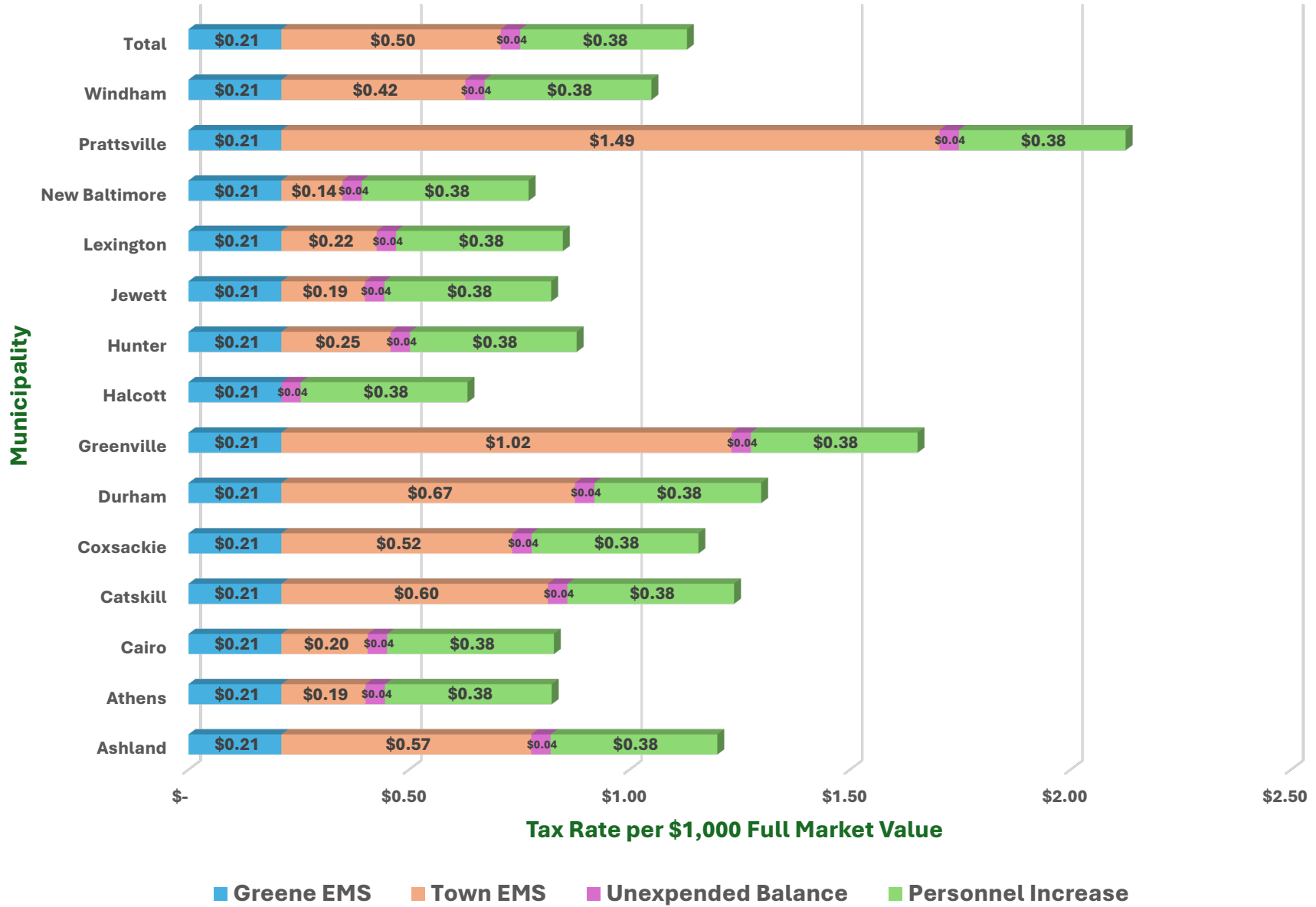


Chart 6 - Redistribution of 20% of Town EMS Levies

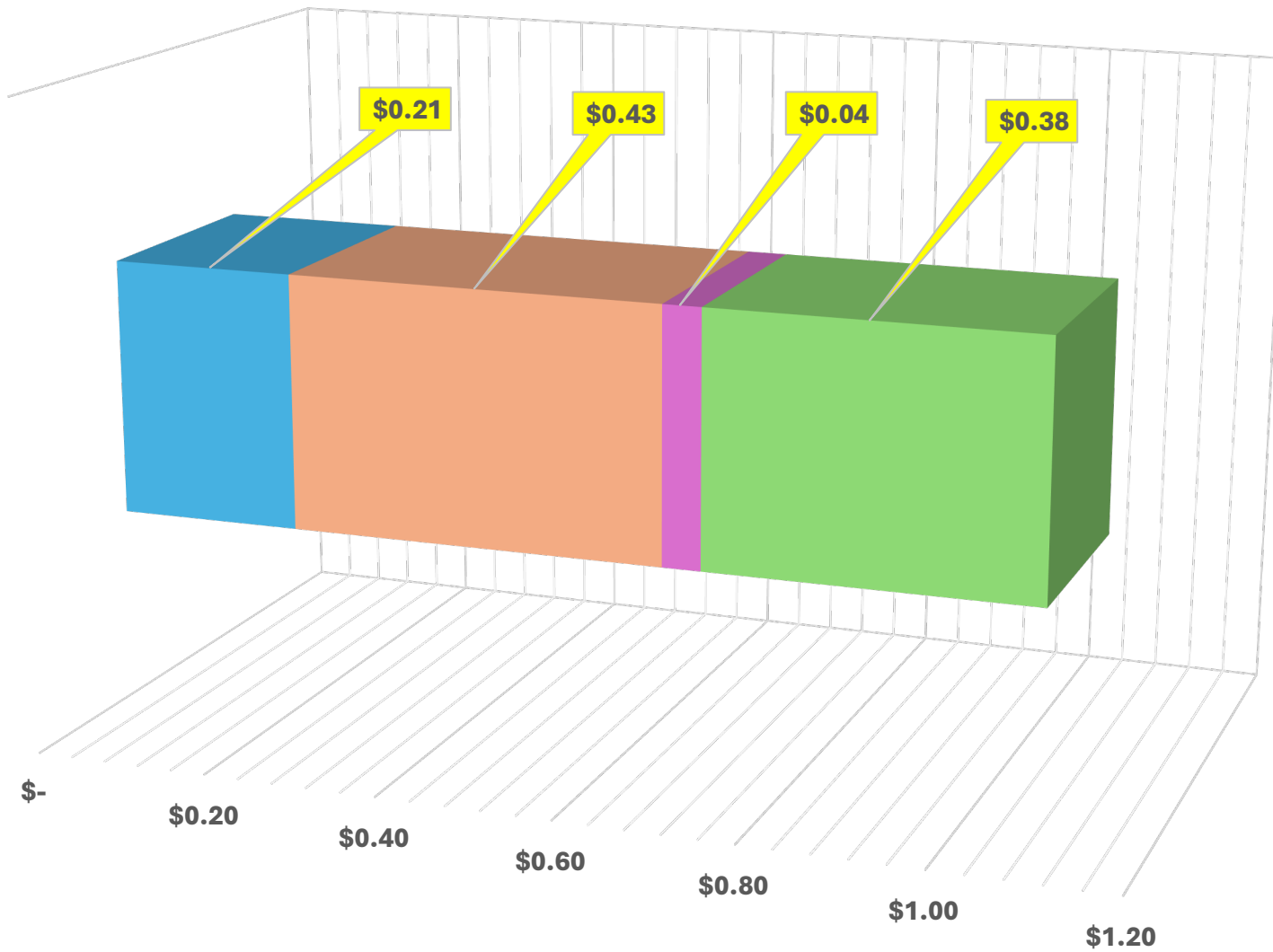


Municipality

# Chart 7 - Current EMS Tax Rates + Personnel Increase

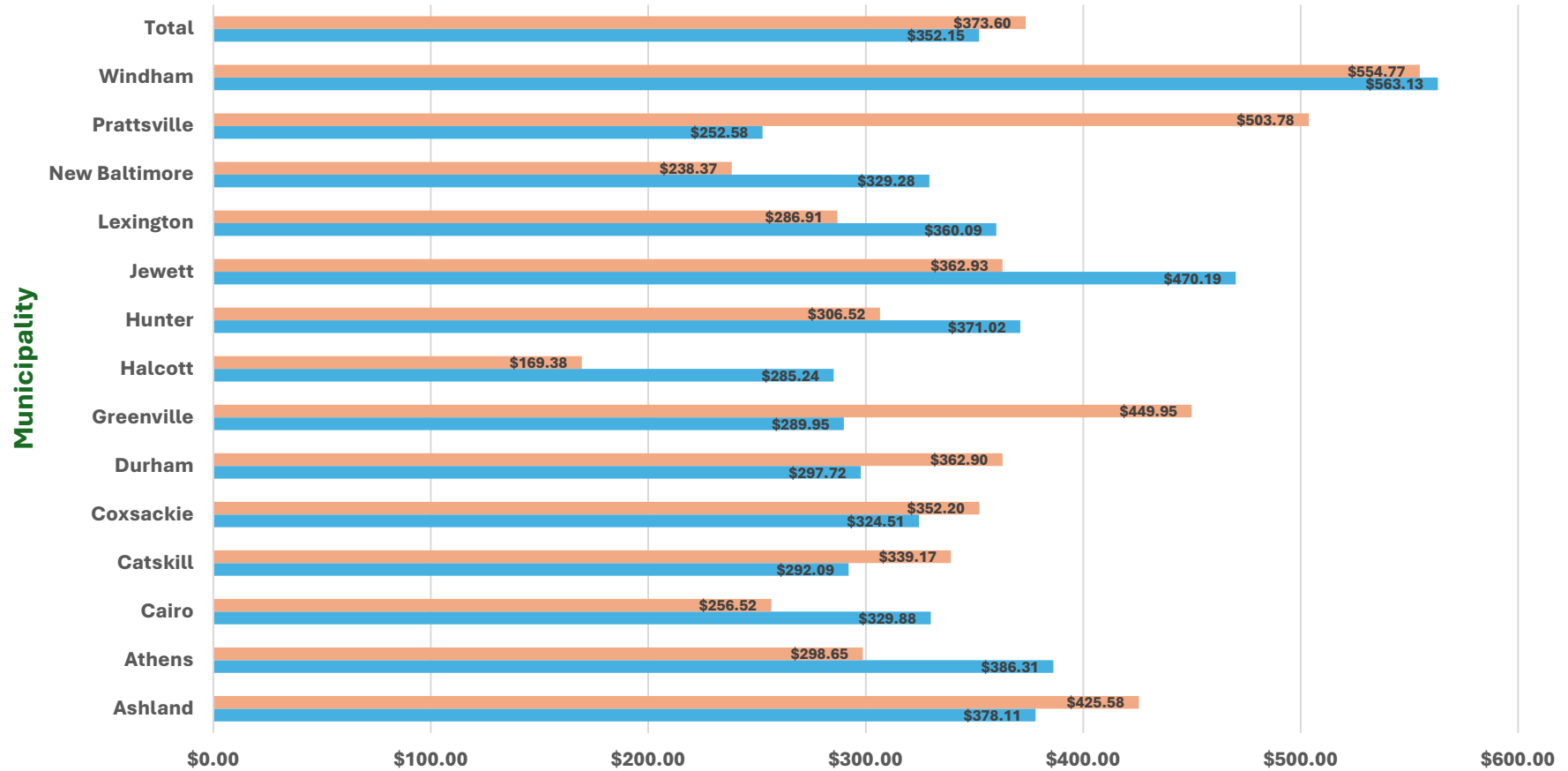


**Chart 8 - Full Value Tax Rates for Components of County EMS**  
**Levy = \$11,537,961**



■ Greene EMS Levy   ■ County Levy of Town EMS   ■ Unexpended Balance   ■ Personnel Increase

# Chart 9 - Comparison of Tax on Single Family Residence Levy = \$11,537,961



	Ashland	Athens	Cairo	Catskill	Coxsackie	Durham	Greenville	Halcott	Hunter	Jewett	Lexington	New Baltimore	Prattsville	Windham	Total
Tax with Town Tax Rate	\$425.58	\$298.65	\$256.52	\$339.17	\$352.20	\$362.90	\$449.95	\$169.38	\$306.52	\$362.93	\$286.91	\$238.37	\$503.78	\$554.77	\$373.60
Tax with County Tax Rate	\$378.11	\$386.31	\$329.88	\$292.09	\$324.51	\$297.72	\$289.95	\$285.24	\$371.02	\$470.19	\$360.09	\$329.28	\$252.58	\$563.13	\$352.15