

BLUE BOOK **2018-2019**

&
2018 Annual Report



PREPARED BY
RAYMOND T. WARD
DIRECTOR

2018 - 2019 BLUE BOOK

INDEX

County Legislators

Section 1 ---- Real Property Tax Service

- Mission Statement
- Origin of the Agency
- 2018 Year in Review
- Information via the Internet
- Greene County Sole Assessors

Section 2 ---- Property Tax

- How the Property Tax Works
- The Property Tax Calendar

Section 3 ---- Summary of Town Budgets

Section 4 ---- Statements of Warrant

- Summary of Real Estate Tax Levy for 2019

Section 5 ---- County, Town & Special Districts Tax Rates

Section 6 ---- Historical Data

- Parcel Counts, Deed Transfers, Maps Recorded, In Rem Parcels
- Town Equalization Rates
- County, Town, Village & School Tax Rates
- Final Assessment Rolls – County & Town Taxable

2018

GREENE COUNTY LEGISLATORS

<u>District</u>	<u>Legislator</u>	<u>Title</u>
1	Michael Bulich	
1	Kevin C. Lennon	
1	Linda H. Overbaugh	
1	Matthew Luvera	
2	Charles A. Martinez	
2	Thomas M. Hobart	
3	Lee Palmateer	
4	Kevin Lewis	Chairman
5	Patrick S. Linger	
6	Lori Torgersen	
7	Larry Gardner	
8	William B. Lawrence	Majority Leader
8	Harry A. Lennon	
9	Aidan O'Connor Jr.	Minority Leader

*****[VISIT OUR COUNTY WEBSITE](http://www.greenegovernment.com)*****

<http://www.greenegovernment.com>

Section 1

Real Property Tax Service

Mission Statement

Origin of the Agency

2018 Year in Review

Information via the Internet

Greene County Sole Assessors

The mission of the Greene County Real Property Tax Service is to provide assistance to the assessment community, local government officials, taxpayers and the general public, continually building confidence and promoting transparency throughout all aspects of real property tax administration and requested services, in a professional and courteous environment.

Raymond T. Ward

Director

STAFF

Deputy Director

GIS / Tax Map Specialist

Senior Clerk

ORIGIN OF THE

REAL PROPERTY TAX SERVICE

The origin of the agency dates back to state and county laws promulgated by the assessment improvement act of 1970. This act separated the assessment function from the assessment review process. This agency was then created by local legislation to take effect April 1, 1971. Today, we are small agency responsible for all aspects of assessment administration as well managing all of the County's geographic information (GIS). The original mandates were simple compared to the complex nature of real property today. The following laws lay the foundation of a well-structured organization.

RPTL ARTICLE 15A TITLE 1 – COUNTY AND STATE ASSESSMENT SERVICES – SECTIONS 1530 THRU 1538. This article regulates the administration of the agency through the powers and duties of the county director and promulgates rules for the county's advisory appraisal services.

RPTL ARTICLE 5 – This article pertains in large part to the assessment of real property. The statute defines the manner in which the agency handles certain situations in reference to descriptions of parcels. In addition, it also provides a guiding doctrine for the body of knowledge related to exemptions, corrections to the assessment roll, and more.

RPTL ARTICLE 5 – TITLE 1-A – ADMINISTRATIVE REVIEW OF ASSESSMENTS - SECTIONS 522 THRU 528. This law mandates training for the Board of Assessment Review members. It provides a great deal of the text of knowledge that the county director must impart to the board in training sessions. This is a mandated function of the office of county director.

RPTL ARTICLE 5 – TITLE 3 – CORRECTION OF ASSESSMENT ROLLS AND TAX ROLLS – SECTIONS 551 THRU 559. In particular, Section 551 – correction of errors on tax rolls provides for relief of error made on an assessment roll by an independent body. It is the responsibility of the Director of Real Property Tax Service to investigate and review information presented and to put forth their recommendation to the taxing jurisdiction, be it the county legislative body or the school district board of education.

In accordance with New York State Real Property Tax Law, this agency provides assessment and taxation related services, which include maintaining tax maps and ownership information; assessment and tax roll files for schools, towns and the County; as well as calculating tax rates for county, towns and special districts, including the apportionment of the County tax rate among 14 towns.

An essential responsibility of this department is the maintenance of the Real Property System (RPS) software, created by NYS Office of Real Property Tax Services. This software program provides a broad range of information such as assessments, property ownership, sales, building inventory, exemptions, land use and size, plus many other fields of information. Our responsibilities include updating and coordinating information in conjunction with Greene County's Information Technology Department, Greene County municipalities, and the State of New York, Office of Real Property Tax Services.

Our staff provides service to the County's departments, fourteen towns, five villages, ten school districts, fourteen tax collectors, numerous appraisers, surveyors, realtors, attorneys, and property owners, as well as the general public. The County's Geographic Information System (GIS) is managed by staff in the Real Property Tax Service for all County Departments. Spatial data is created and maintained by the agency, in addition to coordinating and using all spatial data received to support County operations. The GIS supports tax parcel mapping, street centerline and address points for emergency response, as well as analysis and mapping projects by other County departments. The Greene County Web Map with the partnered SDG Image Mate Online website is used extensively to view, query and print many useful spatial layers the County has to offer.

2018 YEAR IN REVIEW

REAL PROPERTY TAX

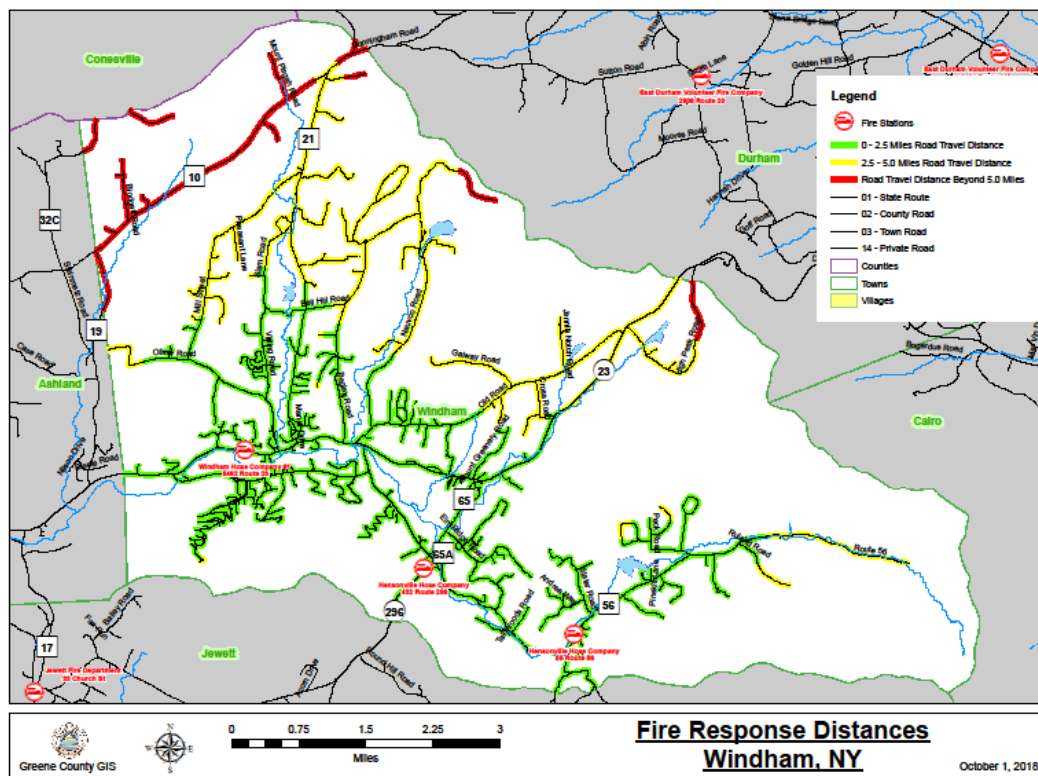
- 2019 Tax Roll and Tax Bill data including School and Village Relevy amounts uploaded to Tax Roll and Tax Bill processor on December 5, 2018.
- Processed 20 Corrections of Errors.
- Board of Assessment Review Training completed April 25, 2018.
- Finalized payment in lieu of taxes (PILOT) for Bogart Solar, LLC project pursuant to RPTL §487.
- Reviewed and recommended increasing the income limits for the Aged Senior Citizens & Persons with Disabilities and Limited Income exemptions.
- Director completed three (3) certification courses (Fundamentals of Data Collection, Application of Three Approaches to Value, and Introduction to Farm Appraisal).
- Deputy Director attended training seminars on Tax Levy Processing and Exemption Audits of the Office of the State Comptroller.
- Director And Deputy Director attended seminar on the development of the New York State Assessment Community Enterprise System (ACES). This will be replacing the current Real Property System (RPS) software in the new decade.
- Deputy Director received training from Columbia County on processing the Real Property data for Assessment Rolls, Tax Rolls and Tax Bills.

TAX MAPPING

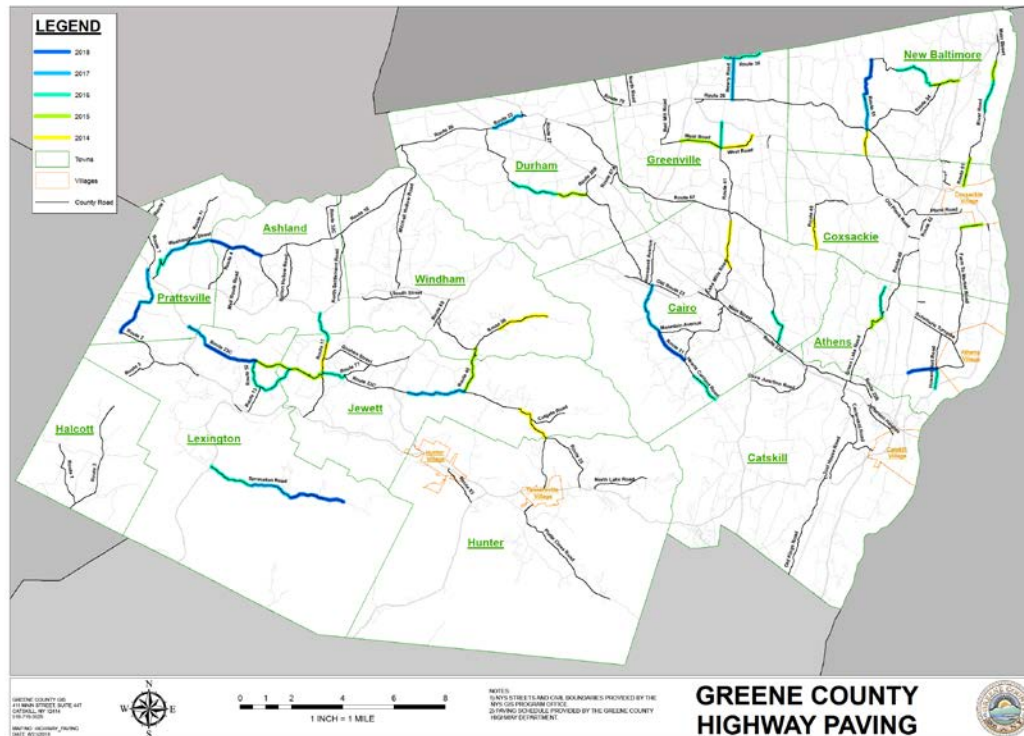
- Processed 2273 Deed Transfers.
- Processed 107 In Rem Tax Foreclosure parcels.
- Processed 117 Recorded Plat Maps.
- Processed 212 Revisions to Greene County's Tax Maps.
- RPTS Web Page continues to account for approximately 8% of www.greenegovernment.com page views.
- Continued updates of map layers on [GreeneWebMap](#)
- Continued Assessment & Parcel History updates to [ImageMate](#) Online.

GIS PROJECTS

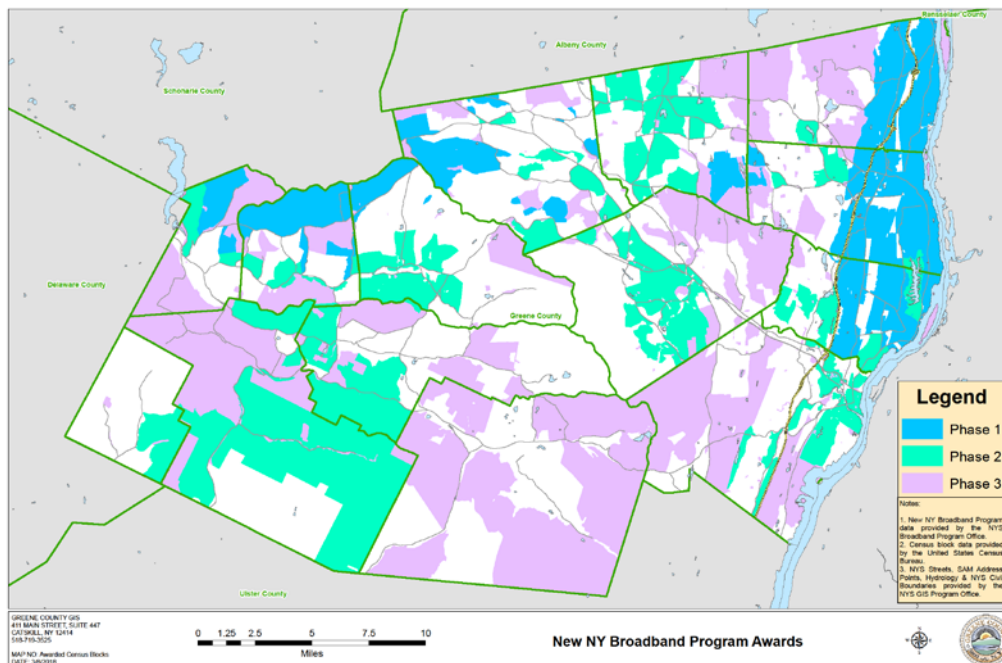
- Fire Response Analysis and Mapping for Windham



- Compiled Five Year Paving History of Greene County Highways.



- New York Broadband Program Awards



- [illegible]





REAL PROPERTY INFORMATION

VIA THE INTERNET

Real Property Tax Assessment Information

Go to: <http://greene.sdgnys.com>

Parcel Search - Image Mate Online Page 1 of 1



Navigation Tools GIS Map Tax Maps DTF Links Help Log In

Greene County Search

Fill in one or more of the fields below to find a property.

Municipality	All Municipalities
Tax ID / SQL	
Last Name *	
First Name *	
Street #	
Street Name	

[Reset] [Search]

[Switch to Advanced Search](#)

* For corporate or business names, it is usually best to search in the last name field.
(M11 version 16.03 (data updated on 01/17/2016))

Neve

2016 Final Roll

- Ashland
- Athens
- Farm
- Capitol
- Coxsackie
- Durham
- Groenewald
- Hulbert
- Hunter
- Jewett
- Lexington
- New Baltimore
- Prattsville
- Windham

Greene County Web Map

Go to: <http://gis.greenegovernment.com/giswebmap>



GIS Data (Geographic Spatial Data)

Go to: <http://gis.ny.gov/gisdata/inventories/member.cfm?organizationID=310>

NYS DTF – Office of Real Property Tax Services

Go to: <http://www.tax.ny.gov/research/property>

2018 GREENE COUNTY **SOLE ASSESSORS**

(Revised April, 2018)

Nancy Bower, Sole Assessor

Town of Ashland

PO Box 129, Ashland, NY 12407

Office - 734-3636

Fax - 734-5834

Office hours: Tuesdays 12:00-4:00

Email: ashassr@yahoo.com

Carol McBride, Sole Assessor

Town of Athens

2 First Street, Athens, NY 12015

Office - 945-1044 (ext. 5)

Fax - 945-2176

Office hours: Monday - Friday - 9:00-4:00

Email: cmcbride@townofathensny.gov

Janice A. Hull, Sole Assessor

Town of Cairo

PO Box 132, Cairo, NY 12413

Office - 622-3120 (ext. 252)

Fax - 622-3217

Email: assessor@townofcairo.com

Audre Higbee, Sole Assessor

Town of Catskill

439 Main Street, Catskill, NY 12414

Office - 943-3132 (ext. 7)

Fax - 943-7121

Email: assessor@townofcatskillny.gov

Gordon Bennett, Sole Assessor

Town of Coxsackie

16 Reed Street, Coxsackie, NY 12051

Office - 731-6893

Fax - 731-2720

Office hours: Mondays

Email: assessor@coxsackie.org

Gordon Bennett, Sole Assessor
Town of Durham
7309 State Rt. 81, East Durham, NY 12423
Office - 239-8362 (ext. 5)
Fax - 239-4140
Office hours: Thursdays
Email: durhamassessor@durhamny.com

Gordon Bennett, Sole Assessor
Town of Greenville
PO Box 38, Greenville, NY 12083
Office - 966-5055 (ext. 3)
Fax - 966-4108
Office hours: Wednesdays
Email: assessorclerk@townofgreenvilleny.com

Marc Neves, Sole Assessor
Town of Halcott
1009 County Rte 3, Halcott Center, NY 12430
Office - (845)-254-4233
Email: mmdneves67@gmail.com

Mark Hommel, Sole Assessor
Town of Hunter
PO Box 70, Tannersville, NY 12485
Office - 589-6209 (ext. 309)
Fax - 589-7197
Email: assessor@townofhuntergov.com

Nancy Bower, Sole Assessor
Town of Jewett
PO Box 132, Jewett, NY 12444
Office - 263-5235
Fax - 263-3758
Office hours: Monday & Friday 9:00-2:00
Email: assessor@townofjewett.org

Nancy Bower, Sole Assessor
Town of Lexington
PO Box 28, Lexington, NY 12452
Office - 989-6263 (ext. 13)
Fax - 989-6618
Office hours: Tues.9:00-11:30, Thurs. 9:00-2:30
Email: assessor@lexingtonny.com

Gordon Bennett, Sole Assessor
Town of New Baltimore
3809 CR 51, Hannacroix, NY 12087
Office - 756-6671 (ext. 8)
Fax - 756-8880
Office hours: Tuesdays
Email: assessor@townofnewbaltimore.org

Dawn DeRose, Sole Assessor
Town of Prattsville
PO Box 418, Prattsville, NY 12468
Office – 299-3125
Fax – 299-3014
Office hours: Tuesdays
Email: prattsvilleassessor@gmail.com

Robert E. Rhoades, Sole Assessor
Town of Windham
PO Box 96, Hensonville, NY 12439
Office - 734-4566
Fax - 734-6058
Email: windassess@mhccable.com

Section 2

Property Tax

How the Property Tax Works

The Property Tax Calendar

HOW THE PROPERTY TAX WORKS

What Is the Property Tax?

In New York State, the real property tax is a tax based on the value of real property. Counties, cities, towns, villages, school districts, and special districts each raise money through the real property tax. The money funds schools, pays for police and fire protection, maintains roads, and funds other municipal services enjoyed by residents. In New York State, there is no personal property tax, which is a tax on personal items, such as cars and jewelry.

What Determines the Amount of a Property Tax Bill?

The amount of a particular property's tax bill is determined by two things: the property's taxable assessment and the tax rates of the taxing jurisdictions in which the property is located. The tax rate is determined by the amount of the tax levy to be raised from all, or part, of an assessing unit, and the unit's total taxable assessed value. The assessment is determined by the assessor and should be based on the value of the property less any applicable property tax exemptions.

What Kind of Property Is Assessed?

Every parcel of real property in an assessing unit, no matter how big or how small, is assessed. Real property is defined as land and any permanent structures attached to it. Examples of real property are houses, gas stations, office buildings, vacant land, shopping centers, saleable natural resources (e.g. oil, gas, timber), farms, apartments, factories, restaurants, and, in most instances, mobile homes.

Though all real property in an assessing unit is assessed, not all of it is taxable. Some, such as religious or government owned property are completely exempt from paying property taxes. Others are partially exempt, such as veterans who qualify for an exemption on part of the property tax on their homes, and homeowners who are eligible for the School Tax Relief (STAR) program.

What Is an Assessment?

A property's assessment is based on its market value. Market value is how much a property would sell for under normal conditions. Assessments are determined by the assessor, an elected or appointed local official who independently estimates the value of real property in an assessing unit. Assessing units follow municipal boundaries - county, city, town, or village.

The assessor can estimate the market value of property based on the sale prices of similar properties. A property can also be valued based on the depreciated cost of materials and labor required to replace it. Commercial property may be valued on its potential to produce rental income for its owners. In other words, the assessor can use whatever approach provides the best estimate of a property's market value; they must be assessed at their current-use value.

Once the assessor estimates the value of a property, its total assessment is calculated by multiplying the market value by the uniform percentage for the municipality. New York State law provides that all property in a municipality be assessed at the same uniform percentage of value (except in Nassau County and NYC where class assessing is authorized). That percentage can be five percent, ten percent, 50 percent, or any other percentage not exceeding 100 percent. It does not matter what percentage is used. What is important is that every property is assessed at the same uniform percentage within one assessing unit.

After a property's total assessment is determined, its taxable assessed value is computed. The taxable assessed value is the total assessment minus any applicable property tax exemptions. Exemptions are typically either whole or partial, that is either an exemption from paying any property tax or an exemption from paying part of a property tax bill.

How Do I Know If My Assessment Is Fair?

In communities assessing property at 100 percent of market value, your assessment should equal roughly the price for which you could sell your property. In communities assessing at a percentage of market value, the estimated market value of each property is listed on the tentative assessment roll. All property owners should check the tentative roll each year. (In most communities, the tentative roll is filed on May 1, but you should check with your assessor for the specific date for your community.)

In addition, it is helpful for taxpayers to bring any questions about assessments to the assessor before the tentative roll is established. In an informal setting the assessor can explain how the assessment was determined and the rationale behind it.

The Property Taxpayer's Bill of Rights requires that your property tax bill show the full value of your property, the assessed value, and the uniform percentage at which properties in your assessing unit are assessed. With those three items, and knowledge of what property is worth, you can determine if your property is being treated fairly.

It is the Assessor's job to ensure that properties are assessed fairly. If your assessment is correct and your tax bill still seems too high, the assessor cannot change that. Complaints to the assessor should concern the assessment of your property, not the amount of your tax bill.

Informal meetings with assessors to resolve assessment questions about the next assessment roll can take place throughout the year. If, after speaking with your assessor, you still feel you are unfairly assessed, ask for the booklet, *How to Contest Your Assessment*. It describes how to make a case for an assessment reduction to the Board of Assessment Review, provides the instructions for filing a complaint, and indicates the time of year it can be done.

What Determines the Tax Rate?

The tax rate is determined by the amount of the tax levy. There are several steps involved in determining the tax levy. First, the taxing jurisdiction (a school district, town, county, etc.) develops and adopts a budget. Revenue from all sources other than the property tax (state aid, sales tax revenue, user fees, etc.) is determined. These revenues are subtracted from the original budget and the remainder becomes the tax levy. It is the amount of the tax levy that is raised through the property tax.

How Is My Tax Bill Figured?

Remember that the real property tax is an ad valorem tax, or a tax based on the value of property. Two owners of real property of equal value should pay the same amount in property taxes. Also, the owner of more valuable property should pay more in taxes than the owner of less valuable property.

The property tax differs from the income tax and the sales tax because it does not depend on how much money you earn or on how much you spend. It is based totally on how much the property you own is worth.

For example, if an assessor assesses property at 15 percent of value, a house and land with a market value of \$100,000 would have an assessment of \$15,000. With no exemptions, this is the property's taxable assessed value. This \$15,000 is not the tax bill. The tax bill for this house depends on the municipality's tax rate.

The tax rate is determined by dividing the total amount of money that has to be raised from the property tax (the tax levy) by the taxable assessed value of taxable real property in a municipality. If, for example, a town levy is \$2,000,000, and the town has a taxable assessed value (the sum of the assessments of all taxable properties) of \$40,000,000, the tax rate would be \$50 for each \$1,000 of taxable assessed value.

$$\$2,000,000 / \$40,000,000 = .050 \times \$1,000 = \$50 \text{ (tax rate)}$$

The town tax bill for this house with an assessment of \$15,000 would be \$750. The \$750 results from dividing the assessment of \$15,000 by \$1,000 to get \$15 (because the tax rate is based on each \$1,000 of assessed value). Then, the \$15 is multiplied by the tax rate to get the tax bill of \$750.

$$\$15,000 / \$1,000 = \$15 \times \$50 = \$750 \text{ (tax bill)}$$

As you can see, the size of the tax bill depends on both the assessment and the tax rate, which is based on the tax levy.

What Else May Occur Before the Tax Rate Is Final?

There are times when tax rates cannot be set until the tax levy is apportioned, or divided, among various municipalities. Apportionment occurs if parts of a school district, or special district, exist in more than one city or town. Taxes are apportioned so that the parts of the district in the different municipalities each pay their fair share of the district tax levy.

The county tax levy also is apportioned among the towns and cities in the county. This is so that cities and towns will each pay their fair share of the county tax levy.

In New York City, Nassau County, and certain other municipalities, the tax levy is apportioned between various classes of real property.

What Makes My Tax Bill Change?

Tax bills increase for one or more of the following reasons: bigger budgets are adopted, revenue from sources other than the property tax shrinks, the taxable assessed value of the assessing unit changes, or the tax levy is apportioned differently.

Taxpayers unhappy with growing property tax bills should not concern themselves just with assessments. They also should examine the scope of budgets and expenditures of the taxing jurisdictions (counties, cities, towns, villages, school districts, etc.) and address those issues in the appropriate available forums, such as meetings of the city council, or town, village, and school boards.

THE PROPERTY TAX CALENDAR

Each year, there are certain dates that property owners should bear in mind. These dates can vary in some counties and municipalities.

You can check the dates for your municipality through New York States [Municipal Profiles](http://orpts.tax.ny.gov/MuniPro/) webpages at <http://orpts.tax.ny.gov/MuniPro/>

1. Select your county - then municipality (or use the search option to find your municipality)
2. Select "Assessment Roll Dates"

Please note: the dates on our website are based on information provided by municipalities. You should contact your assessor to confirm the dates for your municipality. (Assessor contact information is also available from Municipal Profiles.)

There are six primary "action" dates for property owners:

1. Taxable Status Date

- March 1 in most communities*
- Due date for exemption applications
- On or around this date, assessment impact notices are sent to property owners in municipalities conducting reassessments

2. Tentative Roll Date

- May 1 in most communities*
- [Tentative assessment roll](#) is made available to the public
- Assessments are based on their condition and ownership on Taxable Status Date and the value of property on Valuation Date (see below)
- Within ten days:
 - Assessment rolls must be available from the municipal website
 - Assessment increase notices must be sent to affected property owners
- You should [check your assessment](#) soon after Tentative Roll Date

3. School Budget Voting Day

- 3rd Tuesday in May
- All residents are eligible to vote

4. Grievance Day

- 4th Tuesday in May in most communities*
- If you [contest your assessment](#), you must file your [grievance application](#) by this date

5. Final Roll Date

- July 1 in most communities*
- If you grieved your assessment and did not receive the relief you requested, you can apply for [judicial review of your assessment](#) within 30 days following Final Roll Date

6. School property tax bills

- Mailed in the beginning of September in most communities*
- Pay close attention to the deadline for payments - they too can vary from one town to the next

7. Municipal & County property tax bills

- Mailed in the beginning of January in most communities*
- Payment deadlines vary in some municipalities and counties

Valuation Date

Valuation Date is the date upon which the value of your property is based. In most communities, Valuation Date is July 1 of the prior year.* For instance, assessments on the 2011 assessment roll (typically made public on May 1, 2011) were based on the value of property as of July 1, 2010.

The lag between Tentative Roll Date and Valuation Date enables assessors and taxpayers to use all available sales before AND after the Valuation Date to estimate the value of property.

Taxable Status Date vs. Valuation Date

As noted above, the assessments published on the tentative and final assessment rolls are:

- ☐ Based on the value of the property on Valuation Date
- ☐ Based on the property's condition and ownership as of Taxable Status Date

Examples:

- ☐ Your home was destroyed by fire in February, 2011 leaving only a vacant lot.
 - Because the property burned down prior to Taxable Status Date, your 2011 assessment was based on the vacant lot only.
 - Your 2011 assessment was based on the value of your vacant lot on July 1, 2010 (Valuation Date).
 - Your September 2011 school taxes and January 2012 town/county taxes are based on the value of the vacant lot.
- ☐ Your home burned down on March 15, 2011 leaving only a vacant lot.
 - Because the property burned down after Taxable Status Date, your 2011 assessment was based on your property with your home intact.
 - Your 2011 assessment was based on the value of your home on July 1, 2010 (Valuation Date).
 - Your September 2011 school taxes and January 2012 town/county taxes are based on the value of your home.

Be involved with the budget process

If you are concerned with the amount of property taxes being collected in your community, you may wish to be involved with the local budgeting processes. There are public meetings you can attend and voice your opinion, and you also have the opportunity to vote on your school budget.

For school district taxes, in addition to voting on the budget, you can attend budget meetings. Generally, the budget meetings are held in the spring through early April.

For municipal and county taxes, budget meetings are held in the fall through mid-November. Special districts (fire districts, sewer districts, etc.) also hold public meetings, but the dates vary. Contact the district for more information.

* Date may vary in some communities. You should confirm the date with your assessor's office.

Section 3

Summary of Town Budgets

SUMMARY OF TOWN BUDGET
Town of Ashland - 2019

FUND	APPROPRIATION	EST REVENUE	UNEXPENDED BALANCE	TAX LEVY
General	\$585,341.00	\$80,350.00		\$504,991.00
General O/S Village				
Highway-Townwide	\$264,300.00	\$35,000.00		\$229,300.00
Highway O/S Village				
Community Dev.				
Fed. Rev. Sharing				
Public Library Fund				
Debt Service				
TOTALS	\$849,641.00	\$115,350.00		\$734,291.00
	Due County Treasurer (chargeback)			\$2,126.84
		TOTAL TO BE RAISED		\$736,417.84
Special Districts:				
Fire	\$69,122.00			\$69,122.00
Fire Protection				
Hydrant				
Light	\$4,500.00			\$4,500.00
Water	\$54,112.00	\$54,112.00		
Sewer	\$354,900.00	\$354,900.00		
TOTALS	\$482,634.00	\$409,012.00		\$73,622.00
GRAND TOTALS	\$1,332,275.00	\$524,362.00		\$807,913.00

SUMMARY OF TOWN BUDGET
Town of Athens - 2019

FUND	APPROPRIATION	EST REVENUE	UNEXPENDED BALANCE	TAX LEVY
General	\$953,958.00	\$912,700.00	\$41,258.00	
General O/S Village	\$56,664.00	\$36,200.00	\$464.00	\$20,000.00
Highway-Townwide	\$317,000.00	\$2,500.00	\$17,528.00	\$296,972.00
Highway O/S Village	\$466,700.00	\$106,500.00	\$25,589.00	\$334,611.00
Community Dev.				
Fed. Rev. Sharing				
Public Library Fund				
Debt Service				
TOTALS	\$1,794,322.00	\$1,057,900.00	\$84,839.00	\$651,583.00
	Due County Treasurer (chargeback)			\$5,726.91
	Consolidated Health			630.00
	TOTAL TO BE RAISED			\$657,939.91
Special Districts:				
Fire	\$283,343.00	\$189,074.00	\$225.00	\$94,044.00
Fire Protection	\$126,579.00			\$126,579.00
Hydrant				
Light				
Water				
Sewer				
Library	\$147,838.00	\$21,100.00		\$126,738.00
TOTALS	\$557,760.00	\$210,174.00	\$225.00	\$347,361.00
GRAND TOTALS	\$2,352,082.00	\$1,268,074.00	\$85,064.00	\$998,944.00

SUMMARY OF TOWN BUDGET
Town of Cairo - 2019

FUND	APPROPRIATION	EST REVENUE	UNEXPENDED BALANCE	TAX LEVY
General	\$2,875,571.26	\$540,905.00	\$160,438.00	\$2,174,228.26
General O/S Village				
Highway-Townwide	\$1,713,842.00	\$246,085.00	\$86,720.00	\$1,381,037.00
Highway O/S Village				
Community Dev.				
Fed. Rev. Sharing				
Public Library Fund				
Debt Service				
TOTALS	\$4,589,413.26	\$786,990.00	\$247,158.00	\$3,555,265.26
	Due County Treasurer (chargeback)			\$11,074.29
		TOTAL TO BE RAISED		\$3,566,339.55
Special Districts:				
Fire	\$472,566.00			\$472,566.00
Fire Protection	\$100,098.74			\$100,098.74
Hydrant	\$30,000.00			\$30,000.00
Light	\$48,700.00			\$48,700.00
Water				
Sewer				
TOTALS	\$651,364.74			\$651,364.74
GRAND TOTALS	\$5,240,778.00	\$786,990.00	\$247,158.00	\$4,206,630.00

SUMMARY OF TOWN BUDGET
Town of Catskill - 2019

FUND	APPROPRIATION	EST REVENUE	UNEXPENDED BALANCE	TAX LEVY
General	\$3,669,652.00	\$2,213,036.00	\$300,000.00	\$1,156,616.00
General O/S Village	\$293,136.00	\$43,100.00		\$250,036.00
Highway-Townwide	\$20,000.00			\$20,000.00
Highway O/S Village	\$1,666,228.00	\$352,000.00		\$1,314,228.00
Community Dev.				
Fed. Rev. Sharing				
Public Library Fund				
Debt Service				
TOTALS	\$5,649,016.00	\$2,608,136.00	\$300,000.00	\$2,740,880.00
	Due County Treasurer (chargeback)			\$16,313.88
		TOTAL TO BE RAISED		\$2,757,193.88
Special Districts:				
Fire	\$292,214.00			\$292,214.00
Fire Protection	\$301,441.00			\$301,441.00
Hydrant	\$21,780.00			\$21,780.00
Light	\$74,390.00			\$74,390.00
Water	\$44,629.00			\$44,629.00
Sewer	\$401,232.00	\$53,000.00		\$348,232.00
TOTALS	\$1,135,686.00	\$53,000.00		\$1,082,686.00
GRAND TOTALS	\$6,784,702.00	\$2,661,136.00	\$300,000.00	\$3,823,566.00

FUND	APPROPRIATION	EST REVENUE	UNEXPENDED BALANCE	TAX LEVY
General	\$1,267,021.00	\$365,104.00	\$278,000.00	\$623,917.00
General O/S Village	\$72,626.00	\$13,840.00	\$55,000.00	\$3,786.00
Highway-Townwide	\$128,410.00	\$300.00	\$50,000.00	\$78,110.00
Highway O/S Village	\$884,886.00	\$200,950.00	\$150,000.00	\$533,936.00
Community Dev.				
Fed. Rev. Sharing				
Public Library Fund				
Debt Service				
Capital Fund				
TOTALS	\$2,352,943.00	\$580,194.00	\$533,000.00	\$1,239,749.00
	Due County Treasurer (chargeback)			\$6,985.98
	TOTAL TO BE RAISED			\$1,246,734.98
Special Districts:				
Fire				
Fire Protection	\$369,663.00			\$369,663.00
Hydrant				
Light				
Water				
Sewer	\$38,000.00	\$38,000.00		
Library	\$250,779.00			\$250,779.00
Ambulance	\$1,232,559.00	\$504,400.00	\$300,000.00	\$428,159.00
TOTALS	\$1,891,001.00	\$542,400.00	\$300,000.00	\$1,048,601.00
GRAND TOTALS	\$4,243,944.00	\$1,122,594.00	\$833,000.00	\$2,288,350.00

SUMMARY OF TOWN BUDGET
Town of Durham - 2019

FUND	APPROPRIATION	EST REVENUE	UNEXPENDED BALANCE	TAX LEVY
General	\$1,190,104.14	\$230,853.00	\$172,400.00	\$786,851.14
General O/S Village				
Highway-Townwide	\$1,324,900.00	\$126,500.00	\$60,000.00	\$1,138,400.00
Highway O/S Village				
Community Dev.				
Fed. Rev. Sharing				
Public Library Fund				
Debt Service				
TOTALS	\$2,515,004.14	\$357,353.00	\$232,400.00	\$1,925,251.14
	Due County Treasurer (chargeback)			\$4,028.07
		TOTAL TO BE RAISED		\$1,929,279.21
Special Districts:				
Fire				
Fire Protection	\$261,120.00			\$261,120.00
Hydrant				
Light	\$11,400.00			\$11,400.00
Water				
Sewer				
TOTALS	\$272,520.00			\$272,520.00
GRAND TOTALS	\$2,787,524.14	\$357,353.00	\$232,400.00	\$2,197,771.14

SUMMARY OF TOWN BUDGET
Town of Greenville - 2019

FUND	APPROPRIATION	EST REVENUE	UNEXPENDED BALANCE	TAX LEVY
General	\$1,226,874.00	\$211,635.00	\$10,535.00	\$1,004,704.00
General O/S Village				
Highway-Townwide	\$1,064,976.00	\$180,036.00	\$118,940.00	\$766,000.00
Highway O/S Village				
Community Dev.				
Fed. Rev. Sharing				
Public Library Fund	\$205,296.00	\$64,750.00	\$29,000.00	\$111,546.00
Debt Service				
TOTALS	\$2,497,146.00	\$456,421.00	\$158,475.00	\$1,882,250.00
	Due County Treasurer (chargeback)			\$4,822.70
			TOTAL TO BE RAISED	\$1,887,072.70
Special Districts:				
Fire	\$349,300.00			\$349,300.00
Fire Protection	\$108,974.00			\$108,974.00
Hydrant				
Light	\$18,050.00			\$18,050.00
Water	\$165,093.00	\$146,618.00		\$18,475.00
Sewer	\$282,670.00	\$150,000.00		\$132,670.00
TOTALS	\$924,087.00	\$296,618.00		\$627,469.00
GRAND TOTALS	\$3,421,233.00	\$753,039.00	\$158,475.00	\$2,509,719.00

SUMMARY OF TOWN BUDGET
Town of Halcott - 2019

FUND	APPROPRIATION	EST REVENUE	UNEXPENDED BALANCE	TAX LEVY
General	\$178,802.00	\$19,044.00	\$10,000.00	\$149,758.00
General O/S Village				
Highway-Townwide	\$183,598.00	\$53,676.00	\$10,000.00	\$119,922.00
Highway O/S Village				
Community Dev.				
Fed. Rev. Sharing				
Public Library Fund				
Debt Service				
TOTALS	\$362,400.00	\$72,720.00	\$20,000.00	\$269,680.00
	Due County Treasurer (chargeback)			(\$380.93)
		TOTAL TO BE RAISED		\$269,299.07
Special Districts:				
Fire				
Fire Protection	\$38,036.00			\$38,036.00
Hydrant				
Light				
Water				
Sewer				
TOTALS	\$38,036.00			\$38,036.00
GRAND TOTALS	\$400,436.00	\$72,720.00	\$20,000.00	\$307,716.00

SUMMARY OF TOWN BUDGET
Town of Hunter - 2019

FUND	APPROPRIATION	EST REVENUE	UNEXPENDED BALANCE	TAX LEVY
General	\$1,845,334.00	\$436,485.00	\$70,000.00	\$1,338,849.00
General O/S Village	\$137,704.00	\$23,200.00		\$114,504.00
Highway-Townwide	\$627,770.00	\$7,925.00	\$145,000.00	\$474,845.00
Highway O/S Village	\$706,453.00	\$84,000.00	\$295,000.00	\$327,453.00
Community Dev.				
Fed. Rev. Sharing				
Public Library Fund				
Debt Service				
TOTALS	\$3,317,261.00	\$551,610.00	\$510,000.00	\$2,255,651.00
	Due County Treasurer (chargeback)			\$8,712.41
			TOTAL TO BE RAISED	\$2,264,363.41
Special Districts:				
Fire	\$252,871.00	\$12,200.00		\$240,671.00
Fire Protection	\$117,620.00			\$117,620.00
Hydrant				
Light	\$19,700.00	\$9,500.00		\$10,200.00
Water				
Sewer				
TOTALS	\$390,191.00	\$21,700.00		\$368,491.00
GRAND TOTALS	\$3,707,452.00	\$573,310.00	\$510,000.00	\$2,624,142.00

SUMMARY OF TOWN BUDGET
Town of Jewett - 2019

FUND	APPROPRIATION	EST REVENUE	UNEXPENDED BALANCE	TAX LEVY
General	\$521,540.00	\$98,724.00	\$30,000.00	\$392,816.00
General O/S Village				
Highway-Townwide	\$682,263.00	\$78,050.00	\$32,000.00	\$572,213.00
Highway O/S Village				
Community Dev.				
Fed. Rev. Sharing				
Public Library Fund				
Debt Service				
TOTALS	\$1,203,803.00	\$176,774.00	\$62,000.00	\$965,029.00
	Due County Treasurer (chargeback)			\$3,026.56
		TOTAL TO BE RAISED		\$968,055.56
Special Districts:				
Fire				
Fire Protection	\$90,000.00			\$90,000.00
Hydrant				
Light				
Water				
Sewer				
TOTALS	\$90,000.00			\$90,000.00
GRAND TOTALS	\$1,293,803.00	\$176,774.00	\$62,000.00	\$1,055,029.00

SUMMARY OF TOWN BUDGET
Town of Lexington - 2019

FUND	APPROPRIATION	EST REVENUE	UNEXPENDED BALANCE	TAX LEVY
General	\$548,914.00	\$36,126.00		\$512,788.00
General O/S Village				
Highway-Townwide	\$790,900.00	\$73,000.00		\$717,900.00
Highway O/S Village				
Community Dev.				
Fed. Rev. Sharing				
Public Library Fund				
Debt Service				
TOTALS	\$1,339,814.00	\$109,126.00		\$1,230,688.00
	Due County Treasurer (chargeback)			\$4,729.38
		TOTAL TO BE RAISED		\$1,235,417.38
Special Districts:				
Fire	\$97,250.00		\$4,500.00	\$92,750.00
Fire Protection				
Hydrant				
Light	\$3,200.00			\$3,200.00
Water				
Sewer				
TOTALS	\$100,450.00		\$4,500.00	\$95,950.00
GRAND TOTALS	\$1,440,264.00	\$109,126.00	\$4,500.00	\$1,326,638.00

SUMMARY OF TOWN BUDGET
Town of New Baltimore - 2019

FUND	APPROPRIATION	EST REVENUE	UNEXPENDED BALANCE	TAX LEVY
General	\$587,853.00	\$253,200.00		\$334,653.00
General O/S Village				
Highway-Townwide	\$936,870.00	\$202,899.00		\$733,971.00
Highway O/S Village				
Community Dev.				
Fed. Rev. Sharing				
Public Library Fund				
Debt Service				
TOTALS	\$1,524,723.00	\$456,099.00		\$1,068,624.00
	Due County Treasurer (chargeback)			\$7,164.48
		TOTAL TO BE RAISED		\$1,075,788.48
Special Districts:				
Fire	\$695,810.00	\$55,800.00	\$15,000.00	\$625,010.00
Fire Protection				
Hydrant				
Light	\$23,000.00			\$23,000.00
Water	\$26,600.00	\$25,850.00		\$750.00
Sewer	\$135,650.00	\$134,200.00		\$1,450.00
Ambulance	\$72,250.00	\$4,050.00		\$68,200.00
TOTALS	\$953,310.00	\$219,900.00	\$15,000.00	\$718,410.00
GRAND TOTALS	\$2,478,033.00	\$675,999.00	\$15,000.00	\$1,787,034.00

SUMMARY OF TOWN BUDGET
Town of Prattsville - 2019

FUND	APPROPRIATION	EST REVENUE	UNEXPENDED BALANCE	TAX LEVY
General	\$505,181.00	\$32,407.00	\$12,500.00	\$460,274.00
General O/S Village				
Highway-Townwide	\$305,592.00	\$54,750.00	\$15,000.00	\$235,842.00
Highway O/S Village				
Community Dev.				
Fed. Rev. Sharing				
Public Library Fund				
Debt Service				
TOTALS	\$810,773.00	\$87,157.00	\$27,500.00	\$696,116.00
	Due County Treasurer (chargeback)			\$2,988.35
			TOTAL TO BE RAISED	\$699,104.35
Special Districts:				
Fire	\$96,721.00		\$25.00	\$96,696.00
Fire Protection				
Hydrant				
Light	\$7,500.00			\$7,500.00
Water	\$36,230.00	\$36,230.00		
Sewer	\$472,221.00	\$472,221.00		
TOTALS	\$612,672.00	\$508,451.00	\$25.00	\$104,196.00
GRAND TOTALS	\$1,423,445.00	\$595,608.00	\$27,525.00	\$800,312.00

SUMMARY OF TOWN BUDGET
Town of Windham - 2019

FUND	APPROPRIATION	EST REVENUE	UNEXPENDED BALANCE	TAX LEVY
General	\$2,191,794.65	\$291,755.00	\$315,318.89	\$1,584,720.76
General O/S Village				
Highway-Townwide	\$747,928.25	\$73,118.01		\$674,810.24
Highway O/S Village				
Community Dev.				
Fed. Rev. Sharing				
Public Library Fund	\$118,560.00	\$6,100.00		\$112,460.00
Debt Service				
TOTALS	\$3,058,282.90	\$370,973.01	\$315,318.89	\$2,371,991.00
	Due County Treasurer (chargeback)			\$4,489.27
			TOTAL TO BE RAISED	\$2,376,480.27
Special Districts:				
Fire	\$231,903.00			\$231,903.00
Fire Protection				
Hydrant	\$3,000.00			\$3,000.00
Light	\$39,500.00			\$39,500.00
Water	\$229,216.04	\$229,216.04		
Sewer	\$702,355.00	\$702,355.00		
Wind Wtr Adv	\$594.00			\$594.00
Sidewalk Mnt	\$8,000.00	\$8,000.00		
TOTALS	\$1,214,568.04	\$939,571.04		\$274,997.00
GRAND TOTALS	\$4,272,850.94	\$1,310,544.05	\$315,318.89	\$2,646,988.00

Section 4

Statements of Warrant

Summary of Real Estate Tax Levy for 2019

2018 STATEMENT OF WARRANT
Signed December 21, 2018

Town of Ashland

	<u>Pay Supervisor</u>	<u>Pay Treasurer</u>	<u>Totals</u>
General Tax	\$504,991.00		\$504,991.00
General Outside Village			
Highway Tax	\$229,300.00		\$229,300.00
Public Library Fund			
Debt Service Fund			
Fire Tax	\$69,122.00		\$69,122.00
Lighting Tax	\$4,500.00		\$4,500.00
Water Tax			
Hydrant Tax			
Sewer Tax			
Delinquent Water Rents	\$17,437.48		\$17,437.48
Unpaid Sewer Bills	\$3,079.78		\$3,079.78
Unsafe Bldg Dem			
County Tax		\$664,123.62	\$664,123.62
Consolidated Health Fund			
School Relevy		\$103,539.39	\$103,539.39
Village Relevy			
Due County Treasurer		\$2,126.84	\$2,126.84
Surplus or Deficit		\$0.09	\$0.09
Bataviakill Watershed			
Totals	\$828,430.26	\$769,789.94	<u>\$1,598,220.20</u>

Collector's Name:
Dawn Thorp
Clerk/Collector
(518) 734-3636

Address:
Town of Ashland
12094 Route 23, PO Box 129
Ashland, NY 12407

2018 STATEMENT OF WARRANT
Signed December 21, 2018

Town of Athens

	<u>Pay Supervisor</u>	<u>Pay Treasurer</u>	<u>Totals</u>
General Tax			
General Outside Village	\$20,000.00		\$20,000.00
Highway Tax	\$631,583.00		\$631,583.00
Library Fund (Spec. Dist.)	\$126,738.00		\$126,738.00
Debt Service Fund			
Fire Tax	\$220,623.00		\$220,623.00
Lighting Tax			
Water Tax			
Hydrant Tax			
Sewer Tax			
Delinquent Water Rents			
Unpaid Sewer Bills			
Unsafe Bldg Dem	\$14,500.00		\$14,500.00
County Tax		\$2,347,216.66	\$2,347,216.66
Consolidated Health Fund		\$630.00	\$630.00
School Relevy		\$668,511.34	\$668,511.34
Village Relevy		\$91,864.55	\$91,864.55
Due County Treasurer		\$5,726.91	\$5,726.91
Surplus or Deficit		\$1.09	\$1.09
Bataviakill Watershed			
Totals	\$1,013,444.00	\$3,113,950.55	<u>\$4,127,394.55</u>

Collector's Name:
LINDA M. STACEY
Clerk-Collector
(518) 945-1052 (opt. 2)

Address:
Town of Athens
2 First St
Athens, NY 12015

2018 STATEMENT OF WARRANT
Signed December 21, 2018

Town of Cairo

	<u>Pay Supervisor</u>	<u>Pay Treasurer</u>	<u>Totals</u>
General Tax	\$2,174,228.26		\$2,174,228.26
General Outside Village			
Highway Tax	\$1,381,037.00		\$1,381,037.00
Public Library Fund			
Debt Service Fund			
Fire Tax	\$572,664.74		\$572,664.74
Lighting Tax	\$48,700.00		\$48,700.00
Water Tax			
Hydrant Tax	\$30,000.00		\$30,000.00
Sewer Tax			
Delinquent Water Rents	\$38,625.64		\$38,625.64
Unpaid Sewer Bills	\$105,240.82		\$105,240.82
Unsafe Bldg Dem			
County Tax		\$2,658,614.23	\$2,658,614.23
Consolidated Health Fund			
School Relevy		\$797,810.24	\$797,810.24
Village Relevy			
Due County Treasurer		\$11,074.29	\$11,074.29
Surplus or Deficit		\$0.37	\$0.37
Bataviakill Watershed			
Totals	\$4,350,496.46	\$3,467,499.13	<u>\$7,817,995.59</u>

Collector's Name:
SUSAN B. HILGENDORFF
Collector
(518) 622-3120 (ext 110)

Address:
Town of Cairo
PO Box 319
Cairo, NY 12413

2018 STATEMENT OF WARRANT
Signed December 21, 2018

Town of Catskill

	<u>Pay Supervisor</u>	<u>Pay Treasurer</u>	<u>Totals</u>
General Tax	\$1,156,616.00		\$1,156,616.00
General Outside Village	\$250,036.00		\$250,036.00
Highway Tax	\$1,334,228.00		\$1,334,228.00
Public Library Fund			
Debt Service Fund			
Fire Tax	\$593,655.00		\$593,655.00
Lighting Tax	\$74,390.00		\$74,390.00
Water Tax	\$44,629.00		\$44,629.00
Hydrant Tax	\$21,780.00		\$21,780.00
Sewer Tax	\$348,232.00		\$348,232.00
Delinquent Water Rents	\$68,392.25		\$68,392.25
Unpaid Sewer Bills	\$22,473.68		\$22,473.68
Unsafe Bldg Dem			
 County Tax		\$4,423,138.96	\$4,423,138.96
Consolidated Health Fund			
School Relevy		\$1,551,454.36	\$1,551,454.36
Village Relevy		\$633,528.97	\$633,528.97
Agricultural Land Conversion			
Due County Treasurer		\$16,313.88	\$16,313.88
Surplus or Deficit		\$0.59	\$0.59
Bataviakill Watershed			
 Totals	\$3,914,431.93	\$6,624,436.76	<u>\$10,538,868.69</u>

Collector's Name:
MICHAEL DE BENEDICTUS
Receiver of Taxes
(518) 943-2141 (Ext. 5)

Address:
Town of Catskill
PO Box 427
Catskill, NY 12414

2018 STATEMENT OF WARRANT
Signed December 21, 2018

Town of Coxsackie

	<u>Pay Supervisor</u>	<u>Pay Treasurer</u>	<u>Totals</u>
General Tax	\$623,917.00		\$623,917.00
General Outside Village	\$3,786.00		\$3,786.00
Highway Tax	\$612,046.00		\$612,046.00
Library Fund (Spec. Dist.)	\$250,779.00		\$250,779.00
Debt Service Fund			
Fire Tax	\$369,663.00		\$369,663.00
Lighting Tax			
Water Tax			
Hydrant Tax			
Sewer Tax			
Ambulance Tax	\$428,159.00		\$428,159.00
Delinquent Water Rents	\$60,917.04		\$60,917.04
Unpaid Sewer Bills			
Unsafe Bldg Dem			
County Tax		\$2,403,755.73	\$2,403,755.73
Consolidated Health Fund			
School Relevy		\$625,389.89	\$625,389.89
Village Relevy		\$86,406.73	\$86,406.73
Due County Treasurer		\$6,985.98	\$6,985.98
Surplus or Deficit		\$0.89	\$0.89
Bataviakill Watershed			
Totals	\$2,349,267.04	\$3,122,539.22	<u>\$5,471,806.26</u>

Collector's Name:
VALERIE C. MURPHY
Tax Collector
(518) 731-7313

Address:
Town of Coxsackie
PO Box 313 -16 Reed Street
Coxsackie, NY 12051

2018 STATEMENT OF WARRANT
Signed December 21, 2018

Town of Durham

	<u>Pay Supervisor</u>	<u>Pay Treasurer</u>	<u>Totals</u>
General Tax	\$786,851.14		\$786,851.14
General Outside Village			
Highway Tax	\$1,138,400.00		\$1,138,400.00
Public Library Fund			
Debt Service Fund			
Fire Tax	\$261,120.00		\$261,120.00
Lighting Tax	\$11,400.00		\$11,400.00
Water Tax			
Hydrant Tax			
Sewer Tax			
Delinquent Water Rents			
Unpaid Sewer Bills			
Unsafe Bldg Dem			
County Tax		\$1,200,805.48	\$1,200,805.48
Consolidated Health Fund			
School Relevy		\$466,535.35	\$466,535.35
Village Relevy			
Due County Treasurer		\$4,028.07	\$4,028.07
Surplus or Deficit		\$0.39	\$0.39
Bataviakill Watershed			
Totals	\$2,197,771.14	\$1,671,369.29	<u>\$3,869,140.43</u>

Collector's Name:
JANET PARTRIDGE
Clerk-Collector
(518) 239-6122 (opt 1)

Address:
Town of Durham
7309 State Rt 81
East Durham, NY 12423

2018 STATEMENT OF WARRANT
Signed December 21, 2018

Town of Greenville

	<u>Pay Supervisor</u>	<u>Pay Treasurer</u>	<u>Totals</u>
General Tax	\$1,004,704.00		\$1,004,704.00
General Outside Village			
Highway Tax	\$766,000.00		\$766,000.00
Public Library Fund	\$111,546.00		\$111,546.00
Debt Service Fund			
Fire Tax	\$458,274.00		\$458,274.00
Lighting Tax	\$18,050.00		\$18,050.00
Water Tax	\$18,475.00		\$18,475.00
Hydrant Tax			
Sewer Tax	\$132,670.00		\$132,670.00
Delinquent Water Rents	\$13,760.90		\$13,760.90
Unpaid Sewer Bills			
Unsafe Bldg Dem			
County Tax		\$1,509,100.40	\$1,509,100.40
Consolidated Health Fund			
School Relevy		\$486,998.89	\$486,998.89
Village Relevy			
Due County Treasurer		\$4,822.70	\$4,822.70
Surplus or Deficit		-\$0.71	-\$0.71
Bataviakill Watershed			
Totals	\$2,523,479.90	\$2,000,921.28	<u>\$4,524,401.18</u>

Collector's Name:
JACKIE PARK
Clerk/Collector
(518) 966-5055 (Ext.23)

Address:
Town of Greenville
PO Box 38
Greenville, NY 12083

2018 STATEMENT OF WARRANT
Signed December 21, 2018

Town of Halcott

	<u>Pay Supervisor</u>	<u>Pay Treasurer</u>	<u>Totals</u>
General Tax	\$149,758.00		\$149,758.00
General Outside Village			
Highway Tax	\$119,922.00		\$119,922.00
Public Library Fund			
Debt Service Fund			
Fire Tax	\$38,036.00		\$38,036.00
Lighting Tax			
Water Tax			
Hydrant Tax			
Sewer Tax			
Delinquent Water Rents			
Unpaid Sewer Bills			
Unsafe Bldg Dem			
County Tax		\$287,559.64	\$287,559.64
Consolidated Health Fund			
School Relevy		\$45,853.79	\$45,853.79
Village Relevy			
Due County Treasurer		(\$380.93)	-\$380.93
Surplus or Deficit		-\$0.10	-\$0.10
Bataviakill Watershed			
Totals	\$307,716.00	\$333,032.40	<u>\$640,748.40</u>

Collector's Name:
ROBIN WHITE
Collector
(845) 701-1364

Address:
22 Bruce Scudder Road
Halcott Center, NY 12430

2018 STATEMENT OF WARRANT
Signed December 21, 2018

Town of Hunter

	<u>Pay Supervisor</u>	<u>Pay Treasurer</u>	<u>Totals</u>
General Tax	\$1,338,849.00		\$1,338,849.00
General Outside Village	\$114,504.00		\$114,504.00
Highway Tax	\$802,298.00		\$802,298.00
Public Library Fund			
Debt Service Fund			
Fire Tax	\$358,291.00		\$358,291.00
Lighting Tax	\$10,200.00		\$10,200.00
Water Tax			
Hydrant Tax			
Sewer Tax			
Delinquent Water Rents	\$58,385.88		\$58,385.88
Unpaid Sewer Bills	\$12,437.82		\$12,437.82
Unsafe Bldg Dem			
 County Tax		\$3,157,871.20	\$3,157,871.20
Consolidated Health Fund			
School Relevy		\$645,988.86	\$645,988.86
Village Relevy		\$128,072.18	\$128,072.18
Due County Treasurer		\$8,712.41	\$8,712.41
Surplus or Deficit		\$1.11	\$1.11
Bataviakill Watershed			
 Totals	\$2,694,965.70	\$3,940,645.76	<u>\$6,635,611.46</u>

Collector's Name:
CORINA PASCUCCI
Clerk-Collector
(518) 589-6151 (Ext.311)

Address:
Town of Hunter
PO Box 909
Tannersville, NY 12485

2018 STATEMENT OF WARRANT
Signed December 21, 2018

Town of Jewett

	<u>Pay Supervisor</u>	<u>Pay Treasurer</u>	<u>Totals</u>
General Tax	\$392,816.00		\$392,816.00
General Outside Village			
Highway Tax	\$572,213.00		\$572,213.00
Public Library Fund			
Debt Service Fund			
Fire Tax	\$90,000.00		\$90,000.00
Lighting Tax			
Water Tax			
Hydrant Tax			
Sewer Tax			
Delinquent Water Rents			
Unpaid Sewer Bills			
Unsafe Bldg Dem			
Junk Ordinance			
County Tax		\$1,643,715.42	\$1,643,715.42
Consolidated Health Fund			
School Relevy		\$241,837.45	\$241,837.45
Village Relevy			
Due County Treasurer		\$3,026.56	\$3,026.56
Surplus or Deficit		\$0.27	\$0.27
Bataviakill Watershed			
Totals	\$1,055,029.00	\$1,888,579.70	<u>\$2,943,608.70</u>

Collector's Name:
MAYA CARL
Clerk/Collector
(518) 263-4646 (Ext. 1)

Address:
Town of Jewett
809 County Route 40
East Jewett, NY 12424

2018 STATEMENT OF WARRANT
Signed December 21, 2018

Town of Lexington

	<u>Pay Supervisor</u>	<u>Pay Treasurer</u>	<u>Totals</u>
General Tax	\$512,788.00		\$512,788.00
General Outside Village			
Highway Tax	\$717,900.00		\$717,900.00
Public Library Fund			
Debt Service Fund			
Fire Tax	\$92,750.00		\$92,750.00
Lighting Tax	\$3,200.00		\$3,200.00
Water Tax			
Hydrant Tax			
Sewer Tax			
Delinquent Water Rents			
Unpaid Sewer Bills	\$660.00		\$660.00
Unsafe Bldg Dem			
County Tax		\$1,123,648.39	\$1,123,648.39
Consolidated Health Fund			
School Relevy		\$248,509.76	\$248,509.76
Village Relevy			
Due County Treasurer		\$4,729.38	\$4,729.38
Surplus or Deficit		\$0.73	\$0.73
Bataviakill Watershed			
Totals	\$1,327,298.00	\$1,376,888.26	<u>\$2,704,186.26</u>

Collector's Name:
CHARLOTTE JAEGER
Clerk-Collector
(518) 989-6476 (Ext. 10)

Address:
Town of Lexington
PO Box 30
Lexington, NY 12452

2018 STATEMENT OF WARRANT
Signed December 21, 2018

Town of New Baltimore

	<u>Pay Supervisor</u>	<u>Pay Treasurer</u>	<u>Totals</u>
General Tax	\$334,653.00		\$334,653.00
General Outside Village			
Highway Tax	\$733,971.00		\$733,971.00
Public Library Fund			
Debt Service Fund			
Fire Tax	\$625,010.00		\$625,010.00
Lighting Tax	\$23,000.00		\$23,000.00
Water Tax	\$750.00		\$750.00
Hydrant Tax			
Sewer Tax	\$1,450.00		\$1,450.00
Ambulance Tax	\$68,200.00		\$68,200.00
Delinquent Water Rents	\$8,263.16		\$8,263.16
Unpaid Sewer Bills	\$35,016.86		\$35,016.86
Unpaid Court Fines			
 County Tax		\$1,381,200.64	\$1,381,200.64
Consolidated Health Fund			
School Relevy		\$477,205.55	\$477,205.55
Village Relevy			
Due County Treasurer		\$7,164.48	\$7,164.48
Surplus or Deficit		\$0.71	\$0.71
Bataviakill Watershed			
 Totals	\$1,830,314.02	\$1,865,571.38	<u>\$3,695,885.40</u>

Collector's Name:
DIANE JORDAN
Collector
(518) 756-6671 x 2

Address:
Town of New Baltimore
Attn: Diane Jordan
3809 CR 51
Hannacroix, NY 12087

2018 STATEMENT OF WARRANT
Signed December 21, 2018

Town of Prattsville

	<u>Pay Supervisor</u>	<u>Pay Treasurer</u>	<u>Totals</u>
General Tax	\$460,274.00		\$460,274.00
General Outside Village			
Highway Tax	\$235,842.00		\$235,842.00
Public Library Fund			
Debt Service Fund			
Fire Tax	\$96,696.00		\$96,696.00
Lighting Tax	\$7,500.00		\$7,500.00
Water Tax			
Hydrant Tax			
Sewer Tax			
Delinquent Water Rents	\$5,002.25		\$5,002.25
Unpaid Sewer Bills	\$3,875.40		\$3,875.40
Unsafe Bldg Dem			
County Tax		\$367,830.15	\$367,830.15
Consolidated Health Fund			
School Relevy		\$97,962.89	\$97,962.89
Village Relevy			
Due County Treasurer		\$2,988.35	\$2,988.35
Surplus or Deficit		-\$0.16	-\$0.16
Bataviakill Watershed			
Totals	\$809,189.65	\$468,781.23	<u>\$1,277,970.88</u>

Collector's Name:
CAROLE CANGELOSI
Collector
(518) 299-3125

Address:
Town of Prattsville
PO Box 345
Prattsville, NY 12468

2018 STATEMENT OF WARRANT
Signed December 21, 2018

Town of Windham

	<u>Pay Supervisor</u>	<u>Pay Treasurer</u>	<u>Totals</u>
General Tax	\$1,584,720.76		\$1,584,720.76
General Outside Village			
Highway Tax	\$674,810.24		\$674,810.24
Public Library Fund	\$112,460.00		\$112,460.00
Debt Service Fund			
Fire Tax	\$231,903.00		\$231,903.00
Lighting Tax	\$39,500.00		\$39,500.00
Water Tax	\$594.00		\$594.00
Hydrant Tax	\$3,000.00		\$3,000.00
Sewer Tax			
Delinquent Water Rents	\$33,070.39		\$33,070.39
Unpaid Sewer Bills	\$21,087.69		\$21,087.69
Unsafe Bldg Dem			
Delinquent Sidewalk	\$996.60		\$996.60
County Tax		\$3,671,097.49	\$3,671,097.49
Consolidated Health Fund			
School Relevy		\$653,433.93	\$653,433.93
Village Relevy			
Due County Treasurer		\$4,489.27	\$4,489.27
Surplus or Deficit		\$1.96	\$1.96
Bataviakill Watershed		\$95,000.00	\$95,000.00
Totals	\$2,702,142.68	\$4,424,022.65	<u>\$7,126,165.33</u>

Collector's Name:
KATHERINE MURRAY
Collector
(518) 734-6309

Address:
Town of Windham
PO Box 214
Hensonville, NY 12439

**COUNTY OF GREENE
SUMMARY OF REAL ESTATE TAX LEVY FOR 2019**

Town	County Tax	School Relevy	Village Relevy	Due Co. Treas. Town A/C	Cons. Health Dist. / Ag. Conv.	Part County Dist.	Surplus On Roll	Total to County Treas.	Total To Town Supervisor	Total Warrant
ASHLAND	\$664,123.62	\$103,539.39		\$2,126.84			\$0.09	\$769,789.94	\$828,430.26	\$1,598,220.20
ATHENS	\$2,347,216.66	\$668,511.34	\$91,864.55	\$5,726.91	\$630.00		\$1.09	\$3,113,950.55	\$1,013,444.00	\$4,127,394.55
CAIRO	\$2,658,614.23	\$797,810.24		\$11,074.29			\$0.37	\$3,467,499.13	\$4,350,496.46	\$7,817,995.59
CATSKILL	\$4,423,138.96	\$1,551,454.36	\$633,528.97	\$16,313.88			\$0.59	\$6,624,436.76	\$3,914,431.93	\$10,538,868.69
COXSACKIE	\$2,403,755.73	\$625,389.89	\$86,406.73	\$6,985.98			\$0.89	\$3,122,539.22	\$2,349,267.04	\$5,471,806.26
DURHAM	\$1,200,805.48	\$466,535.35		\$4,028.07			\$0.39	\$1,671,369.29	\$2,197,771.14	\$3,869,140.43
GREENVILLE	\$1,509,100.40	\$486,998.89		\$4,822.70			-\$0.71	\$2,000,921.28	\$2,523,479.90	\$4,524,401.18
HALCOTT	\$287,559.64	\$45,853.79		(\$380.93)			-\$0.10	\$333,032.40	\$307,716.00	\$640,748.40
HUNTER	\$3,157,871.20	\$645,988.86	\$128,072.18	\$8,712.41			\$1.11	\$3,940,645.76	\$2,694,965.70	\$6,635,611.46
JEWETT	\$1,643,715.42	\$241,837.45		\$3,026.56			\$0.27	\$1,888,579.70	\$1,055,029.00	\$2,943,608.70
LEXINGTON	\$1,123,648.39	\$248,509.76		\$4,729.38			\$0.73	\$1,376,888.26	\$1,327,298.00	\$2,704,186.26
NEW BALTIMORE	\$1,381,200.64	\$477,205.55		\$7,164.48			\$0.71	\$1,865,571.38	\$1,830,314.02	\$3,695,885.40
PRATTSVILLE	\$367,830.15	\$97,962.89		\$2,988.35			-\$0.16	\$468,781.23	\$809,189.65	\$1,277,970.88
WINDHAM	\$3,671,097.49	\$653,433.93		\$4,489.27		\$95,000.00	\$1.96	\$4,424,022.65	\$2,702,142.68	\$7,126,165.33
Totals	\$26,839,678.01	\$7,111,031.69	\$939,872.43	\$81,808.19	\$630.00	\$95,000.00		\$35,068,027.55	\$27,903,975.78	\$62,972,003.33

Section 5

County, Town & Special District Tax Rates

**2018 EQUALIZATION TABLE
APPORTIONMENT OF COUNTY TAX - 2019 BUDGET**

Town	Taxable Assessed Valuation	Exemptions Added for Apptnment	Assessed Value for Apptnment	Equaliz. Rate	Full Value	Current Year Apptnment	Prior Yr Adjust.	Current Yr Apportnmt Adj	Omitted Taxes	Total to be Raised	Tax Rate at Full Value	Tax Rate per \$ 1,000
ASHLAND	107,121,533		107,121,533	74.00	144,758,828	664,057.18		664,057.18	66.44	664,123.62	4.587335	6.199101
ATHENS	511,673,311		511,673,311	100.00	511,673,311	2,347,216.66		2,347,216.66		2,347,216.66	4.587335	4.587335
CAIRO	394,097,630		394,097,630	68.00	579,555,338	2,658,614.23		2,658,614.23		2,658,614.23	4.587335	6.746080
CATSKILL	558,568,765		558,568,765	58.00	963,049,595	4,417,830.68		4,417,830.68	5,308.28	4,423,138.96	4.587335	7.909198
COXSACKIE	373,348,823		373,348,823	71.25	523,998,348	2,403,755.73		2,403,755.73		2,403,755.73	4.587335	6.438364
DURHAM	208,757,910		208,757,910	79.75	261,765,404	1,200,805.48		1,200,805.48		1,200,805.48	4.587335	5.752144
GREENVILLE	257,419,869		257,419,869	78.25	328,971,079	1,509,100.40		1,509,100.40		1,509,100.40	4.587335	5.862408
HALCOTT	67,700,405		67,700,405	108.00	62,685,560	287,559.64		287,559.64		287,559.64	4.587335	4.247532
HUNTER	385,497,907		385,497,907	56.00	688,389,120	3,157,871.20		3,157,871.20		3,157,871.20	4.587335	8.191669
JEWETT	358,316,011		358,316,011	100.00	358,316,011	1,643,715.42		1,643,715.42		1,643,715.42	4.587335	4.587335
LEXINGTON	244,945,812		244,945,812	100.00	244,945,812	1,123,648.39		1,123,648.39		1,123,648.39	4.587335	4.587335
NEW BALTIMORE	214,526,638		214,526,638	71.25	301,090,018	1,381,200.64		1,381,200.64		1,381,200.64	4.587335	6.438364
PRATTSVILLE	80,183,850		80,183,850	100.00	80,183,850	367,830.15		367,830.15		367,830.15	4.587335	4.587335
WINDHAM	800,268,097		800,268,097	100.00	800,268,097	3,671,097.49		3,671,097.49		3,671,097.49	4.587335	4.587335
Totals	4,562,426,561	0	4,562,426,561		5,849,650,372	26,834,303.29	0.00	26,834,303.29	5,374.72	26,839,678	4.587335	
	Amount to be Raised by County Tax				26,839,678			Sum of Total Raised		26,839,678.01		
	Percent Increase				1.2%							
<u>Revised 11/21/18</u>	State Aid to County				18,018,535							

TOWN PURPOSES

General - 2018 Valuation, Levy, Tax Rate, Omitted Tax, Uniform Percent & 2019 State Aid (2019 Budgets)

<u>TOWN</u>	<u>TAXABLE ASSESSED VALUATION</u>	<u>AMOUNT RAISED</u>	<u>% INCREASE</u>	<u>TAX RATE PER 1000</u>	<u>OMITTED TAX INC'D</u>	<u>UNIFORM PERCENT</u>	<u>ESTIMATED STATE AID</u>
Ashland	109,238,237	\$736,417.84	7.7%	6.740756	\$69.51	74.00%	\$41,000.00
Athens						100.00%	\$224,000.00
Inside	160,596,677	\$95,308.51		0.593465			
Outside	350,518,340	\$562,631.36		1.605141			
Total	511,115,017	\$657,939.87	-0.7%				
Cairo	394,940,190	\$3,566,339.55	2.5%	9.030075		68.00%	\$350,890.00
Catskill						58.00%	\$488,500.00
Inside	164,346,709	\$349,478.86		2.123859	\$429.62		
Outside	395,783,397	\$2,407,715.02		6.076182	\$2,863.07		
Total	560,130,106	\$2,757,193.88	0.3%				
Coxsackie						71.25%	\$310,794.00
Inside	104,920,674	\$197,557.87		1.882926			
Outside	271,627,759	\$1,049,176.89		3.862554			
Total	376,548,433	\$1,246,734.76	-0.8%				
Durham	209,211,135	\$1,929,279.21	3.0%	9.221685		79.75%	\$155,750.00
Greenville	256,278,188	\$1,887,072.70	8.9%	7.363376		78.25%	\$220,564.00
Halcott	69,274,441	\$269,299.07	0.2%	3.887423		108.00%	\$56,219.00
Hunter						56.00%	\$151,800.00
Inside	83,705,631	\$395,510.78		4.725020			
Tanns.	68,236,342	\$322,418.08		4.725020			
Outside	233,750,889	\$1,546,434.64		6.615738			
Total	385,692,862	\$2,264,363.50	5.4%				
Jewett	357,372,935	\$968,055.56	3.6%	2.708811		100.00%	\$115,574.00
Lexington	245,915,090	\$1,235,417.38	2.5%	5.023756		100.00%	\$87,886.00
New Baltimore	217,440,637	\$1,075,788.48	-0.6%	4.947504		71.25%	\$257,399.00
Prattsville	83,352,747	\$699,104.35	0.5%	8.387298		100.00%	\$52,550.00
Windham	800,772,426	\$2,376,480.27	2.6%	2.967735		100.00%	\$153,018.01

SPECIAL DISTRICTS - Valuation, Levy and Tax Rates - 2018

(2019 Budgets)

	TAXABLE			
	ASSESSED	TAX	%	TAX RATE
	VALUATION	LEVIED	INCREASE	PER 1000
<u>ASHLAND</u>				
FD201 Ashland Fire	112,971,860	69,122.00	0.4%	0.611792
LD201 Ashland Light	7,299,467	4,500.00	12.5%	0.616483
SD201 Ashland Sewer Units	0			0.000000
WD201 Ashland Water Units	0			0.000000
<u>ATHENS</u>				
FD221 Athens Fire Prot	184,613,931	90,370.00	0.0%	0.489508
FD222 Leeds Fire Prot	64,591,393	36,209.00	0.0%	0.560586
FD223 W Athens-Limestone Fire	119,517,839	94,044.00	11.3%	0.786862
LB221 Library	391,227,592	126,738.00	6.0%	0.323950
<u>CAIRO</u>				
FD241 Cairo Fire	323,305,467	472,566.00	3.3%	1.461670
FD242 Round Top Fire Prot	80,476,775	100,098.74	0.0%	1.243822
HD241 Cairo Hydrant	47,005,887	30,000.00	0.0%	0.638218
LD241 Acra Light	23,310,759	10,000.00	-4.8%	0.428987
LD 242 Cairo Light	39,317,886	21,000.00	-8.3%	0.534108
LD243 F Hitchcock Rd Light	5,724,790	3,500.00	9.4%	0.611376
LD244 Purling Light	8,237,167	5,000.00	-18.0%	0.607005
LD245 Round Top Light	4,220,650	2,000.00	-20.0%	0.473861
LD246 South Cairo Light	12,892,542	6,000.00	-7.7%	0.465385
LD247 Winter Clove Light	4,167,370	1,200.00	-25.0%	0.287951
SD241 Cairo Sewer	46,482,456			
SD242 Cairo Sewer Units	557.50			
WD241 Cairo Water	37,722,509			0.000000
<u>CATSKILL</u>				
FD261 Catskill Fire Prot	144,556,151	192,454.00	2.4%	1.331344
FD262 Kiskatom Fire	109,760,073	163,213.00	4.4%	1.486998
FD263 Leeds Fire Prot	94,210,735	108,987.00	0.0%	1.156843
FD264 Palenville Fire	58,430,079	129,001.00	-0.1%	2.207784
HD261 Allen Street Hydrant	6,966,378	1,980.00	0.0%	0.284222
HD262 Jefferson Hydrant	49,996,530	13,068.00	0.0%	0.261378
HD263 Leeds Hydrant	12,903,531	6,732.00	0.0%	0.521718
LD261 Allen Street Light	7,460,609	2,990.00	0.0%	0.400772
LD262 Cementon Light	19,417,406	13,575.00	0.0%	0.699115
LD263 Jefferson Light	56,498,560	31,400.00	0.0%	0.555766
LD264 Palenville Light	34,256,062	26,425.00	0.0%	0.771396
SD260 Allen Street Sewer Cap	39.5	6,600.00	-2.9%	167.09
SD261 Allen Street Sewer	13,919,639	0.00	0.0%	0.000000
SD262 Cementon Sewer	7,072,206	16,365.00	#DIV/0!	2.313988
SD263 Post Avenue Sewer	12	2,327.00	-5.1%	193.920000
SD264 Leeds Jefferson cap	831	290,500.00	309.2%	349.580000
SD265 Leeds Jefferson swr	769	32,440.00		42.180000
WD262 Leeds Jefferson wtr cap	888	44,629.00		50.260000
WD263 Leeds Jefferson wtr	829	0.00		

SPECIAL DISTRICTS - Valuation, Levy and Tax Rates - 2018

(2019 Budgets)

	TAXABLE			
	ASSESSED	TAX	%	TAX RATE
	VALUATION	LEVIED	INCREASE	PER 1000
<u>COXSACKIE</u>				
AD281 Ambulance	448,253,717	428,159.00	0.1%	0.955171
FD281 Coxsackie Fire Prot	339,391,913	369,663.00	-0.1%	1.089192
LB281 Coxsackie Library	448,253,717	250,779.00	2.7%	0.559458
<u>DURHAM</u>				
FD301 Durham Fire Prot	135,337,258	127,620.00	3.0%	0.942978
FD302 East Durham Fire Prot	116,601,231	133,500.00	3.0%	1.144928
LD301 Durham Light	3,470,358	1,300.00	8.3%	0.374601
LD302 East Durham Light 1	4,982,469	3,700.00	5.7%	0.742604
LD303 East Durham Light 2	3,544,797	3,900.00	2.6%	1.100204
LD304 Oak Hill Light	5,007,877	2,500.00	0.0%	0.499214
<u>GREENVILLE</u>				
FD321 Freehold Fire Prot	92,673,877	108,974.00	2.0%	1.175887
FD322 Greenville Fire	178,362,588	349,300.00	4.8%	1.958370
LD321 Freehold Light	9,394,289	7,000.00	0.0%	0.745134
LD322 Greenville Light	14,162,700	7,600.00	0.0%	0.536621
LD323 Greenville Light 2	25,373,939	3,450.00	0.0%	0.135966
SD321 Sewer	24,864,439	24,367.15	1.3%	0.980000
SD322 Greenville Sewer Ext	13,519,200	40,557.60	0.0%	3.000000
SD322 Greenville Sewer Ext (GSD	21,525	67,745.25	6.6%	3.147282
WD321 Greenville Wtr (Op&Cap)	41,789,964	12,194.10	0.3%	0.291795
WD322 Greenville Wtr (Cap Only)	21,525,000	6,280.89	-0.6%	0.291795
<u>HALCOTT</u>				
FD341 Halcott Fire Prot	72,907,505	38,036.00	-0.8%	0.521702
<u>HUNTER</u>				
FD361 Haines Falls Fire	54,850,148	90,000.00	0.0%	1.640834
FD363 Hunter Fire 2 Prot	41,252,495	50,421.00	3.0%	1.222253
FD364 Hunter Fire 3 Prot	35,348,798	67,199.00	3.0%	1.901027
FD365 Tannersville Fire	174,671,395	150,671.00	6.2%	0.862597
LD361 Haines Falls Light	23,949,392	9,000.00	-50.0%	0.375792
LD362 Hunter Light 1	2,746,974	500.00	-58.3%	0.182019
LD363 Hunter Light 3	4,043,870	700.00	-63.2%	0.173102
<u>JEWETT</u>				
FD381 Jewett Fire Prot	368,366,918	90,000.00	0.0%	0.244322
<u>LEXINGTON</u>				
FD401 Lexington Fire	253,801,842	92,750.00	8.0%	0.365443
LD401 Lexington Light	6,844,259	3,200.00	0.0%	0.467545

SPECIAL DISTRICTS - Valuation, Levy and Tax Rates - 2018

(2019 Budgets)

	TAXABLE			
	ASSESSED	TAX	%	TAX RATE
	<u>VALUATION</u>	<u>LEVIED</u>	<u>INCREASE</u>	<u>PER 1000</u>
<u>NEW BALTIMORE</u>				
AD421 NB Ambulance 2	91,020,752	34,375.00	0.0%	0.377661
AD422 NB Ambulance 1	147,628,596	33,825.00	1.5%	0.229122
FD421 Medway Fire	91,020,752	193,360.00	0.7%	2.124351
FD422 New Baltimore Fire	147,713,713	431,650.00	2.0%	2.922207
LD 421 New Baltimore Light 1	39,305,717	21,000.00	-4.5%	0.534273
LD 422 New Baltimore Light 2	12,646,597	2,000.00	-4.8%	0.158145
SD429 New Baltimore Sewer 1	314.6	0.00		0.000000
SD430 New Baltimore Sewer 2	3.5	1,450.00	-5.2%	414.29
WD421 New Baltimore Water 1	6,959,085	750.00	-25.0%	0.107773
WD422 New Baltimore Water 2	4,553,761	0.00		0.000000
WD424 New Baltimore Water 4	0.0			0.000000
<u>PRATTSVILLE</u>				
FD441 Prattville Fire	86,115,891	96,696.00	1.8%	1.122859
HD441 Prattville Hydrant	15,293,527			0.000000
LD441 Prattville Light	15,013,127	7,500.00	15.4%	0.499563
WD441 Prattville Water	16,058,127			0.000000
SD441 Prattville Sewer	7,075,600			
<u>WINDHAM</u>				
FD462 Windham Fire	807,782,088	231,903.00	13.3%	0.287086
HD461 Windham Hydrant	25,763,367	3,000.00	28.2%	0.116444
LD461 Hensonville Light	26,648,411	10,500.00	0.0%	0.394020
LD462 Maplecrest Light	7,185,514	4,000.00	0.0%	0.556676
LD463 Windham Light	88,963,337	25,000.00	0.0%	0.281015
SW461 Sidewalk Maintenance	0	0.00		0.000000
WD469 Windham Wtr-Fixed Dollar	594	594.00	-0.3%	1.00
SD462 Windham Swr-Fixed Dollar	185	0.00		
WS461 Bataviakill Watershed	807,503,455	95,000.00	0.0%	0.117647

Revised 11/27/18

Section 6

HISTORICAL DATA

Parcel Counts, Deed Transfers, Maps Recorded, In Rem Parcels

Town Equalization Rates

County, Town, Village & School Tax Rates

Town Assessment Totals

GREENE COUNTY REAL PROPERTY TAX SERVICE -- HISTORICAL DATA

Revised 12/31/2018

	<u>2005**</u>	<u>2006**</u>	<u>2007**</u>	<u>2008**</u>	<u>2009**</u>	<u>2010**</u>	<u>2011</u>	<u>2012</u>	<u>2013</u>	<u>2014</u>	<u>2015</u>	<u>2016</u>	<u>2017</u>	<u>2018</u>
Total Parcel Count (March 1st)	37,375	37,718	37,921	38,087	38,212	38,268	38,373	38,402	38,402	38,398	38,430	38,455	38,435	38,431
Total Deed Transfers	3,293	2,974	2,391	1,963	1,654	1,710	1,650	1,593	1,947	1,888	2,001	2,425	2,381	2,273
Total Maps Filed	222	247	210	190	142	153	122	127	144	129	136	178	134	117
Total Tax Sale Parcels	42	34	22	30	0	201	86	134	143	539	155	148	131	107

**Totals represent September thru August filings. 2011 forward represents calendar year.

TOWN EQUALIZATION RATES

	<u>2005</u>	<u>2006</u>	<u>2007</u>	<u>2008</u>	<u>2009</u>	<u>2010</u>	<u>2011</u>	<u>2012</u>	<u>2013</u>	<u>2014</u>	<u>2015</u>	<u>2016</u>	<u>2017</u>	<u>2018</u>
Ashland	85.00%	69.00%	57.00%	55.50%	60.00%	64.25%	64.25%	67.00%	65.00%	68.00%	75.00%	73.00%	77.00%	74.00%
Athens	93.00%	75.00%	65.25%	60.00%	58.50%	60.25%	63.00%	67.00%	100.00%	100.00%	100.00%	100.00%	100.00%	100.00%
Cairo	87.00%	73.50%	60.50%	57.05%	59.50%	63.25%	67.00%	70.00%	71.00%	70.00%	68.00%	68.00%	68.00%	68.00%
Catskill	79.46%	66.69%	62.47%	58.00%	58.00%	59.80%	60.30%	60.50%	58.80%	59.00%	59.00%	61.00%	60.00%	58.00%
Coxsackie	87.00%	76.00%	64.50%	64.00%	64.00%	68.50%	71.50%	75.50%	74.00%	75.50%	76.00%	76.25%	74.00%	71.25%
Durham	85.50%	76.50%	62.50%	61.00%	60.00%	64.00%	64.50%	68.00%	70.00%	75.50%	76.25%	77.25%	80.50%	79.75%
Greenville	91.00%	78.50%	69.50%	65.50%	66.50%	74.00%	76.00%	80.00%	79.50%	79.25%	82.00%	81.25%	80.50%	78.25%
Halcott	76.00%	58.50%	49.00%	44.50%	45.50%	100.00%	100.00%	100.00%	100.00%	104.00%	107.68%	107.00%	108.00%	108.00%
Hunter	72.57%	61.55%	49.20%	52.00%	51.30%	53.50%	57.00%	61.00%	61.00%	59.70%	60.00%	60.00%	56.75%	56.00%
Jewett	100.00%	100.00%	76.75%	74.00%	77.25%	80.00%	83.00%	86.00%	100.00%	102.00%	100.00%	100.00%	100.00%	100.00%
Lexington	90.00%	74.50%	62.00%	56.75%	60.95%	64.75%	68.00%	100.00%	100.00%	100.00%	100.00%	100.00%	100.00%	100.00%
New Baltimore	87.00%	76.00%	64.50%	64.00%	64.00%	68.50%	71.50%	75.50%	74.00%	75.50%	76.00%	76.25%	74.00%	71.25%
Prattsville	76.00%	68.50%	55.00%	54.50%	56.25%	55.87%	59.75%	65.00%	100.00%	100.00%	100.00%	100.00%	100.00%	100.00%
Windham	85.00%	72.40%	64.92%	61.53%	61.75%	65.00%	70.00%	72.00%	100.00%	100.00%	100.00%	100.00%	97.50%	100.00%

COUNTY TAX RATES

	<u>2005-06</u>	<u>2006-07</u>	<u>2007-08</u>	<u>2008-09</u>	<u>2009-10</u>	<u>2010-11</u>	<u>2011-12</u>	<u>2012-13</u>	<u>2013-14</u>	<u>2014-15</u>	<u>2015-16</u>	<u>2016-17</u>	<u>2017-18</u>	<u>2018-19</u>
Ashland	5.176525	4.734910	5.440826	5.662633	5.324222	5.355223	5.655622	5.781448	6.165089	6.134325	5.693526	6.3223	6.048533	6.199101
Athens	4.731233	4.356117	4.752906	5.237935	5.460740	5.710756	5.767837	5.781448	4.007308	4.171341	4.270145	4.615279	4.65737	4.587335
Cairo	5.057525	4.445018	5.126068	5.508783	5.368962	5.439890	5.423488	5.533672	5.644096	5.959058	6.279624	6.787175	6.849074	6.74608
Catskill	5.537436	4.898917	4.964417	5.418553	5.507815	5.753730	6.026098	6.402595	6.815149	7.070069	7.237533	7.566031	7.762284	7.909198
Coxsackie	5.057525	4.298800	4.808172	4.910564	4.991457	5.022964	5.082150	5.130557	5.415281	5.524955	5.618611	6.052825	6.293743	6.438364
Durham	5.146253	4.270703	4.962034	5.152067	5.324221	5.376142	5.633701	5.696427	5.724726	5.524955	5.600190	5.974471	5.785553	5.752144
Greenville	4.835216	4.161896	4.462261	4.798108	4.803808	4.649636	4.781233	4.841963	5.040639	5.263522	5.207493	5.680344	5.785553	5.862408
Halcott	5.789535	5.584766	6.329125	7.062385	7.020950	3.440731	3.633738	3.873571	4.007308	4.010905	3.965588	4.313345	4.31238	4.247532
Hunter	6.063176	5.308022	6.303396	6.043771	6.227159	6.431272	6.374977	6.350115	6.569357	6.987171	7.116908	7.692132	8.20682	8.191669
Jewett	4.400047	3.267088	4.040744	4.246975	4.135317	4.300913	4.377997	4.504151	4.007308	4.089550	4.270145	4.615279	4.65737	4.587335
Lexington	4.888941	4.385353	5.002050	5.537905	5.241235	5.313870	5.343731	3.873570	4.007308	4.171341	4.270145	4.615279	4.65737	4.587335
New Baltimore	5.057525	4.298800	4.808172	4.910564	4.991457	5.022964	5.082150	5.130557	5.415281	5.524955	5.618611	6.052825	6.293743	6.438364
Prattsville	5.789535	4.769472	5.638675	5.766535	5.679170	6.158459	6.081569	5.959339	4.007308	4.171341	4.270145	4.615279	4.65737	4.587335
Windham	5.176525	4.512552	4.777066	5.107689	5.173332	5.293432	5.191053	5.379959	4.007308	4.171341	4.270145	4.615279	4.77679	4.587335

TOWN TAX RATES

	<u>2005-06</u>	<u>2006-07</u>	<u>2007-08</u>	<u>2008-09</u>	<u>2009-10</u>	<u>2010-11</u>	<u>2011-12</u>	<u>2012-13</u>	<u>2013-14</u>	<u>2014-15</u>	<u>2015-16</u>	<u>2016-17</u>	<u>2017-18</u>	<u>2018-19</u>
Ashland	5.193894	5.258319	5.242285	5.436176	5.485943	5.750724	5.832555	5.865752	5.995713	5.995713	6.111472	6.207334	6.32853	6.740756
Athens (Inside)	0.912158	0.883295	1.051380	1.032759	1.244605	1.181138	1.272975	1.074948	0.682820	0.682820	0.648532	0.638559	0.60571	0.593465
Athens (Outside)	2.154617	2.136170	2.237123	2.457375	2.465710	2.573493	2.633184	2.772548	1.775804	1.775804	1.727762	1.699515	1.619523	1.605141
Cairo	5.846406	5.858512	5.886362	6.520335	7.233096	7.774836	7.839270	7.846694	8.070841	8.070841	8.237876	8.523672	8.880516	9.030075
Catskill (Inside)	1.790763	1.750498	1.712858	2.094170	2.054991	2.028017	1.987911	2.007274	2.050684	2.050684	2.501242	2.435661	2.331386	2.123859
Catskill (Outside)	4.868750	4.894194	5.068899	5.396900	5.552405	5.657012	5.707339	5.728748	5.863625	5.863625	6.145525	6.052818	5.997585	6.076182
Coxsackie (Inside)	1.124994	0.603003	0.734451	0.971034	1.179075	1.343347	1.576594	1.464552	1.396014	1.396014	1.935063	1.957667	1.832094	1.882926
Coxsackie (Outside)	3.267452	2.972130	3.008086	3.318435	3.612855	3.882364	4.071322	3.962471	3.962972	3.962972	4.581281	4.607783	4.17979	3.862554
Durham	7.267942	7.743720	7.789575	7.853989	8.136644	8.599897	8.596632	8.434688	8.572246	8.572246	8.654564	8.639769	9.036734	9.221685
Greenville	5.681740	5.646834	5.533984	5.394391	5.417939	6.279733	6.352805	6.302091	6.334029	6.334029	6.523620	6.720325	6.818264	7.363376
Halcott	4.548596	4.854955	5.561535	6.155675	6.411593	3.166372	3.238021	3.312391	3.386413	3.386413	3.709525	3.836006	3.90065	3.887423
Hunter (Inside)	3.311088	3.356677	3.075406	3.337230	3.488728	3.678518	3.714909	3.713092	3.885107	3.885107	4.043213	4.33847	4.490244	4.72502
Hunter (Outside)	4.465282	4.479815	4.449984	4.863037	5.074679	5.334617	5.517831	5.549461	5.565213	5.565213	5.811470	5.941461	6.309103	6.615738
Jewett	2.634306	2.412447	2.564401	2.806153	2.986716	3.384846	3.566718	3.390667	2.544640	2.544640	2.740793	2.6364	2.624335	2.708811
Lexington	4.753216	4.706526	4.695453	4.747732	5.154218	5.176054	5.224341	3.441889	3.396940	3.396940	4.488732	4.827784	4.948128	5.023756
New Baltimore	5.172790	5.092131	5.329061	5.385059	5.334258	5.335999	5.266769	5.237311	5.240683	5.240683	5.128001	5.045368	4.986239	4.947504
Prattsville	11.892202	12.059647	12.271491	12.353494	13.621184	14.129857	14.119568	17.748413	8.465504	8.465504	8.408075	8.391962	8.54983	8.387298
Windham	2.995425	2.886876	3.002421	3.115645	3.160856	3.752071	3.786069	3.945150	2.864806	2.864806	2.940594	2.89588	3.034527	2.967735

VILLAGE TAX RATES

	<u>2005-06</u>	<u>2006-07</u>	<u>2007-08</u>	<u>2008-09</u>	<u>2009-10</u>	<u>2010-11</u>	<u>2011-12</u>	<u>2012-13</u>	<u>2013-14</u>	<u>2014-15</u>	<u>2015-16</u>	<u>2016-17</u>	<u>2017-18</u>	<u>2018-19</u>
Athens Village	8.620	9.200	9.653	9.744	9.923	10.035	10.52	10.72	10.71	6.45	6.56	6.55	6.65	6.47
Catskill Village	19.980	19.980	19.980	20.180	20.780	21.67	22.10	22.15	22.20	22.27	22.71	23.07	23.48	23.68
Coxsackie Village	9.890	10.060	10.950	11.820	13.180	13.18	13.26	13.30	13.30	13.46	13.86	13.86	13.1	13.05149
Hunter Village	5.200	5.200	5.200	5.200	5.200	5.20	5.20	5.20	5.20	7.10	7.21	7.21	7.21	7.41
Tannersville Village	6.650	6.650	5.916	5.030	5.190	5.35	5.71	5.61	5.46	5.58	6.10	6.407	6.4032	6.384415

GREENE COUNTY SCHOOL DISTRICT TAX RATES

	<u>2005-06</u>	<u>2006-07</u>	<u>2007-08</u>	<u>2008-09</u>	<u>2009-10</u>	<u>2010-11</u>	<u>2011-12</u>	<u>2012-13</u>	<u>2013-14</u>	<u>2014-15</u>	<u>2015-16</u>	<u>2016-17</u>	<u>2017-18</u>	<u>2018-19</u>
<u>Cairo-Durham</u>														
Athens	15.8170	18.1120	17.4841	17.87770	18.4960	19.8024	20.2634	20.7999	14.5972	14.881993	14.91275	14.986429	15.507942	15.62366
Cairo	16.9093	18.4823	18.8569	18.80230	18.1851	18.8632	19.0536	19.9085	20.5594	21.259990	21.93052	22.039699	22.805797	22.97597
Catskill	18.5139	20.3701	18.2622	18.49410	18.6554	19.9515	21.1707	23.0346	24.8251	25.223716	25.27585	24.568845	25.846570	26.93735
Coxsackie	16.9117	17.8730	17.6874	16.76030	16.9065	17.4175	17.8544	18.4582	19.7259	19.711292	19.62204	19.655076	20.856674	21.92794
Durham	17.2057	17.7574	18.2535	17.58460	18.0336	18.6421	19.7921	20.4940	20.8531	19.711248	19.55771	19.400641	19.264524	19.5908
Greenville	16.1656	17.3047	16.4149	16.37640	16.2709	16.123	16.7972	17.4199	18.3613	18.778539	18.18632	18.445533	19.264524	19.96634
<u>Catskill</u>														
Athens	19.9041	21.2228	23.1809	23.99429	24.5527	24.989734	24.7865	24.6345	15.8723	16.800552	16.88978	17.382321	17.171440	17.20612
Cairo	21.2768	21.6559	25.0014	23.830612	24.1400	23.804424	24.2895	26.0252	19.9518	26.228256	24.83791	25.265236	25.252110	25.30312
Catskill	23.2958	23.8673	24.2125	24.738116	24.7644	25.177783	25.8968	26.9012	27.3394	27.922468	28.62721	28.496067	28.619500	29.66606
<u>Coxsackie-Athens</u>														
Athens	20.1462	21.6462	21.5381	23.02180	23.5463	24.5803	25.1719	25.6667	17.0170	17.7200	17.98300	17.8624	17.735300	17.6156
Cairo	21.5361	22.0879	23.2291	24.21230	23.1505	23.4144	23.6691	24.5667	23.9676	25.3141	26.44540	26.2681	26.081300	25.9052
Coxsackie	21.5360	21.3617	21.7889	21.58330	21.5230	21.6202	22.1797	22.7774	22.9962	23.4704	23.66200	23.4263	23.966900	24.7237
New Baltimore	21.5360	21.3618	21.7890	21.58340	21.5231	21.6203	22.1798	22.7774	22.9963	23.4709	23.66260	23.4268	23.967400	24.7244
<u>Gilboa-Conesville</u>														
Ashland	17.032126	18.830665	21.510606	22.196918	20.163041	18.38351354	18.938	18.5827	16.6032	15.737181	14.31424	14.962055	15.818220	16.40259
Lexington	16.086023	18.366773	19.776190	21.704365	19.848256	18.24148109	17.8938	12.4495	10.7921	10.701283	10.73568	10.9223	12.180099	12.13792
Prattsville	19.049938	19.976399	22.293653	22.604936	21.507513	21.14119873	20.3646	19.1551	10.7918	10.701283	10.73568	10.9223	12.180078	12.13792
<u>Greenville</u>														
Cairo	22.4512	24.5139	25.9875	26.884621	26.5306	27.4851	27.4819	28.5469	29.3431	29.8430	31.85998	31.9092	32.428100	32.33497
Coxsackie	22.4512	23.7075	24.3760	23.965119	24.6652	25.3786	25.7523	26.4673	28.1536	27.6690	28.50630	28.4567	29.798700	30.86004
Durham	22.8490	23.5564	25.1600	25.147578	26.3134	27.1672	28.5514	29.3908	29.7668	27.6731	28.41700	28.0924	27.396600	27.74877
Greenville	21.4651	22.9532	22.6228	23.416746	23.7384	23.4925	24.2276	24.9787	26.2060	26.3600	26.42064	26.7058	27.393200	28.09992
New Baltimore	22.4512	23.7075	24.3760	23.965119	24.6652	25.3786	25.7523	26.4673	28.1536	27.6690	28.50630	28.4567	29.798700	30.86004
<u>Hunter-Tannersville</u>														
Hunter	15.4679	16.5371	16.8844	17.11840	17.9943	17.9901	18.1303	18.2403	18.3839	19.228078	19.65396	19.883348	19.989436	20.33142
Jewett	11.2250	10.1785	10.8236	12.02910	11.9496	12.030832	12.4509	12.9409	11.2247	11.089688	11.77826	11.930008	11.343961	11.38555
Lexington	12.4722	13.6625	13.3985	15.68560	15.1453	14.864348	15.1974	10.4400	11.9078	11.497963	11.77826	11.930008	11.343961	11.35555
<u>Margaretville</u>														
Halcott	12.987060	14.320064	15.362384	15.805591	15.300797	7.935315	7.8698	7.8698	8.3301	8.175056	8.02301	8.218023	8.245498	8.43257
Lexington	10.966851	11.244614	12.141239	12.393811	11.422252	12.255313	11.5732	11.5732	8.3301	8.502058	8.63918	8.793284	8.905138	9.107176
<u>Onteora</u>														
Lexington	12.340537	13.556584	15.433532	16.074342	15.828194	16.19945	16.7254	11.6689	11.7958	11.696952	11.71496	11.646684	11.715794	11.78492
<u>Ravena-Coeymans-Selkirk</u>														
New Baltimore	21.551326	24.285807	26.589526	27.222501	27.932400	27.325838	26.8941	27.9221	25.3741	25.3102	25.54830	25.643	27.681400	28.3369
<u>Windham-Ashland-Jewett</u>														
Ashland	10.2667	11.1234	11.6263	11.49448	11.0202	11.162230	11.9195	11.9303	12.3383	12.14365	11.10023	11.210054	10.640433	11.05378
Durham	10.2063	10.0325	10.6028	10.45776	11.0199	11.205490	11.8732	11.7547	11.4569	10.93716	10.91810	10.593165	10.177659	10.25665
Jewett	8.7264	7.6749	8.6342	8.62058	8.5591	8.964390	9.2268	9.2944	8.0198	8.09564	8.32505	8.18322	8.193015	8.179681
Lexington	9.6960	10.3018	10.6883	11.24094	10.8481	11.075690	11.2623	7.9932	8.0198	8.25756	8.32505	8.18322	8.193015	8.179681
Prattsville	11.4821	11.2042	12.0487	11.70501	11.7546	14.659670	10.9941	12.2972	8.0198	8.25756	8.01980	8.18322	8.193015	8.179681
Windham	10.2664	10.6007	10.2076	10.36774	10.7076	11.033160	10.9407	11.1017	8.0198	8.25757	8.32507	8.183236	8.403109	8.179696

HISTORIC TOWN ASSESSED VALUES

(Based on Final Assessment Rolls)

<u>Town</u>	<u>Assessed Value</u>	<u>2011 Eq. Rate</u>	<u>Full Value</u>
Ashland	108,332,589	64.25	168,611,033
Athens	1,248,204,646	63.00	1,981,277,216
Cairo	412,332,357	67.00	615,421,428
Catskill	680,594,473	60.30	1,128,680,718
Coxsackie	525,929,784	71.50	735,566,131
Durham	252,285,774	64.50	391,140,735
Greenville	302,522,527	76.00	398,055,957
Halcott	68,677,531	100.00	68,677,531
Hunter	409,634,803	57.00	718,657,549
Jewett	270,628,086	83.00	326,057,935
Lexington	170,129,630	68.00	250,190,632
New Baltimore	242,323,073	71.50	338,913,389
Prattsville	56,310,424	59.75	94,243,387
Windham	557,175,271	70.00	795,964,673

<u>Town</u>	<u>Assessed Value</u>	<u>2012 Eq. Rate</u>	<u>Full Value</u>
Ashland	116,068,868	67.00	173,237,116
Athens	1,249,326,079	67.00	1,864,665,790
Cairo	415,449,703	70.00	593,499,576
Catskill	671,147,483	60.50	1,109,334,683
Coxsackie	527,779,136	75.50	699,045,213
Durham	252,891,265	68.00	371,898,919
Greenville	302,047,427	80.00	377,559,284
Halcott	70,188,501	100.00	70,188,501
Hunter	415,853,254	61.00	681,726,646
Jewett	273,694,834	86.00	318,249,807
Lexington	244,814,438	100.00	244,814,438
New Baltimore	244,236,604	75.50	323,492,191
Prattsville	54,303,465	65.00	83,543,792
Windham	558,158,610	75.00	744,211,480

<u>Town</u>	<u>Assessed Value</u>	<u>2013 Eq. Rate</u>	<u>Full Value</u>
Ashland	117,286,509	65.00	180,440,783
Athens	1,804,407,807	100.00	1,804,407,807
Cairo	420,638,436	71.00	592,448,501
Catskill	670,441,745	58.80	1,140,207,049
Coxsackie	528,707,179	74.00	714,469,161
Durham	254,772,114	70.00	363,960,163
Greenville	301,467,025	79.50	379,203,805
Halcott	70,728,963	100.00	70,728,963
Hunter	415,968,273	61.00	681,915,202
Jewett	359,458,329	100.00	359,458,329
Lexington	245,077,762	100.00	245,077,762
New Baltimore	243,864,766	74.00	329,546,981
Prattsville	91,716,983	100.00	91,716,983
Windham	768,347,923	100.00	768,347,923

<u>Town</u>	<u>Assessed Value</u>	<u>2014 Eq. Rate</u>	<u>Full Value</u>
Ashland	117,394,499	68.00	172,638,969
Athens	1,799,882,365	100.00	1,799,882,365
Cairo	426,649,070	70.00	609,498,671
Catskill	665,557,729	59.00	1,128,063,947
Coxsackie	529,848,963	75.50	701,786,706
Durham	255,889,855	75.50	338,926,960
Greenville	302,323,994	79.25	381,481,380
Halcott	71,583,534	104.00	68,830,321
Hunter	418,372,460	59.70	700,791,390
Jewett	360,076,745	102.00	353,016,417
Lexington	244,096,893	100.00	244,096,893
New Baltimore	245,195,015	75.50	324,761,609
Prattsville	91,620,202	100.00	91,620,202
Windham	766,309,797	100.00	766,309,797

<u>Town</u>	<u>Assessed Value</u>	<u>2015 Eq. Rate</u>	<u>Full Value</u>
Ashland	119,229,023	75.00	158,972,031
Athens	1,798,989,950	100.00	1,798,989,950
Cairo	429,011,589	68.00	630,899,396
Catskill	663,696,130	59.00	1,124,908,695
Coxsackie	561,067,492	76.00	738,246,700
Durham	257,090,190	76.25	337,167,462
Greenville	303,702,014	82.00	370,368,310
Halcott	72,158,411	107.68	67,011,897
Hunter	419,266,944	60.00	698,778,240
Jewett	360,308,745	100.00	360,308,745
Lexington	248,607,558	100.00	248,607,558
New Baltimore	247,214,084	76.00	325,281,689
Prattsville	92,438,237	100.00	92,438,237
Windham	775,846,218	100.00	775,846,218

<u>Town</u>	<u>Assessed Value</u>	<u>2016 Eq. Rate</u>	<u>Full Value</u>
Ashland	120,282,313	75.00	160,376,417
Athens	1,810,893,129	100.00	1,810,893,129
Cairo	432,185,191	68.00	635,566,457
Catskill	661,612,286	59.00	1,121,376,756
Coxsackie	570,022,016	76.00	750,028,968
Durham	260,747,457	76.25	341,963,878
Greenville	304,594,051	82.00	371,456,160
Halcott	72,458,977	107.68	67,291,026
Hunter	420,195,382	60.00	700,325,637
Jewett	361,523,996	100.00	361,523,996
Lexington	247,685,829	100.00	247,685,829
New Baltimore	249,056,576	76.00	327,706,021
Prattsville	93,951,113	100.00	93,951,113
Windham	796,621,647	100.00	796,621,647

<u>Town</u>	<u>Assessed Value</u>	<u>2017 Eq. Rate</u>	<u>Full Value</u>
Ashland	121,293,384	77.00	157,523,875
Athens	1,838,901,019	100.00	1,838,901,019
Cairo	432,953,002	68.00	636,695,591
Catskill	663,009,352	60.00	1,105,015,587
Coxsackie	569,433,396	74.00	769,504,589
Durham	262,108,616	80.50	325,600,765
Greenville	305,924,397	80.50	380,030,307
Halcott	72,704,588	108.00	67,319,063
Hunter	421,187,781	56.75	742,181,112
Jewett	374,165,556	100.00	374,165,556
Lexington	256,609,169	100.00	256,609,169
New Baltimore	250,639,975	74.00	338,702,669
Prattsville	94,744,907	100.00	94,744,907
Windham	796,237,867	97.50	816,654,223

<u>Town</u>	<u>Assessed Value</u>	<u>2018 Eq. Rate</u>	<u>Full Value</u>
Ashland	122,158,984	74.00	165,079,708
Athens	1,840,636,390	100.00	1,840,636,390
Cairo	435,496,319	68.00	640,435,763
Catskill	662,616,229	58.00	1,142,441,774
Coxsackie	570,001,230	71.25	800,001,726
Durham	264,448,253	79.75	331,596,555
Greenville	308,383,915	78.25	394,100,850
Halcott	73,319,971	108.00	67,888,862
Hunter	423,538,356	56.00	756,318,493
Jewett	376,568,036	100.00	376,568,036
Lexington	260,128,939	100.00	260,128,939
New Baltimore	251,000,653	71.25	352,281,618
Prattsville	101,338,481	100.00	101,338,481
Windham	834,859,698	100.00	834,859,698